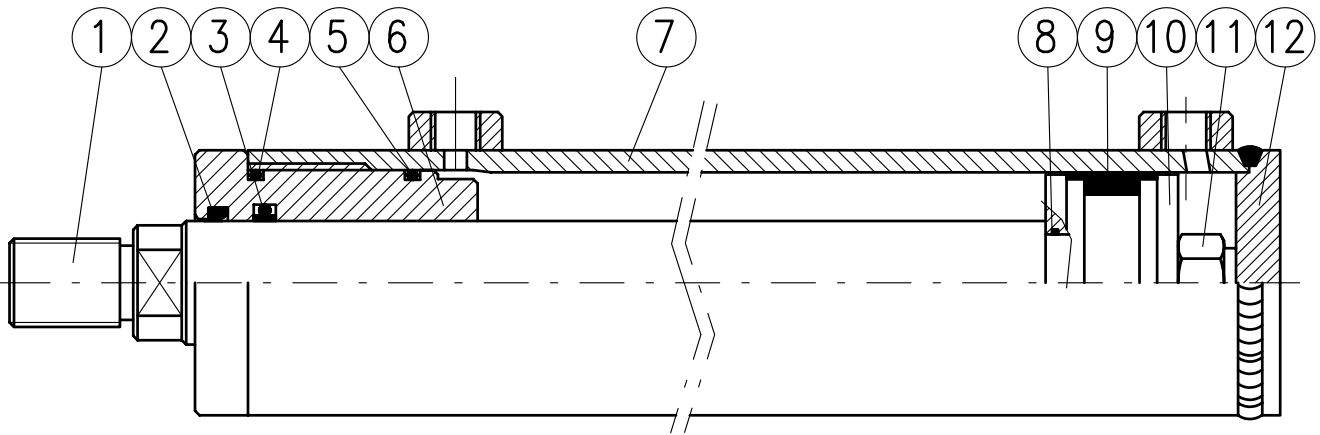


CYLINDERS SERIES CL

Working pressure 14 Mpa
Maximum pressure 21 Mpa

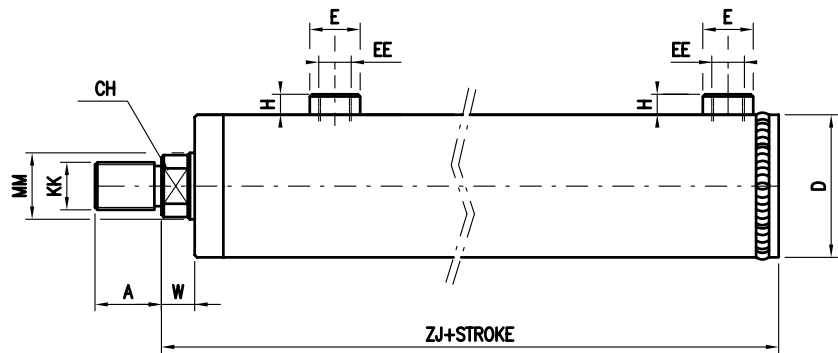
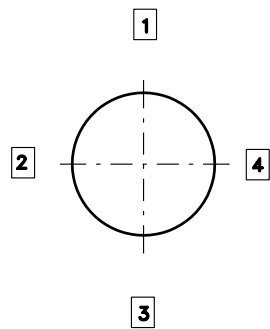
Working temperature -10 to 75°C
6 bores, 40 to 100 mm



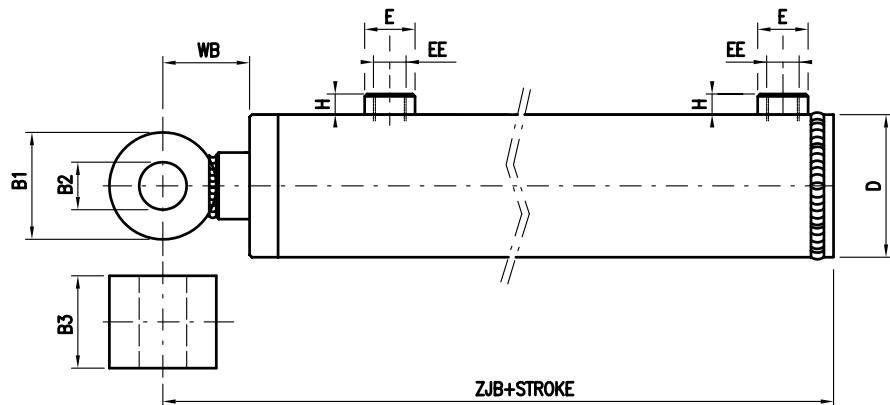
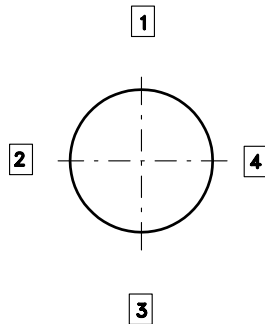
POS.	ITEM	MATERIAL	POS.	ITEM	MATERIAL
1	Rod	Chrom. plated st.	7	Liner	Steel
2	Dust scraper	Poyuretane	8	O-ring	Nitrile rubber
3	Rod seal	Nitrile rubber	9	Piston seal	Nitrile rubber
4	O-ring	Nitrile rubber	10	Piston	Steel
5	O-ring	Nitrile rubber	11	Nut	Steel
6	Guide	Cast iron	12	Cap	Steel

EXAMPLE: DETERMINING THE ACRONYM FOR THE ORDER

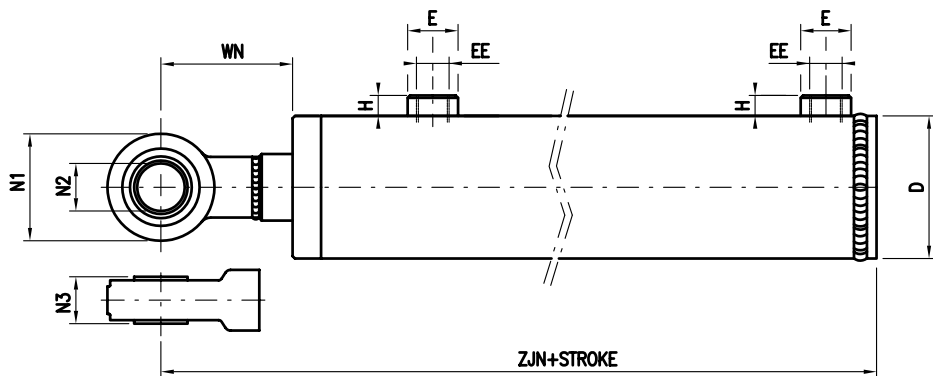
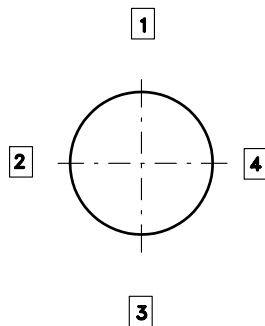
CHARACTERISTIC	DESCRIPTION	SYM.	EXAMPLE
SERIES	welded cylinders	CL	<p>CL/50/25/100/EBM0A</p>
BORE	indicate mm		
ROD	indicate mm		
STROKE	indicate mm stroke to fast delivery 100-200-300-400-500		
EXECUTION	base	EB	
	front flange	FA	
	eye hinge	OC	
	male hinge	CM	
	joint hinge	CS	
ROD END	intermediate trunnion	OI	
	male tread	M	
	with ring welded	B	
SPACER	with joint welded	N	
	without spacer	0	
	50mm	1	
	100mm	2	
	150mm	3	
SEALS	200mm	4	
	elastomer+nitrile (low pressure sealig)	A	



EBM: (BASE MALE TREAD)

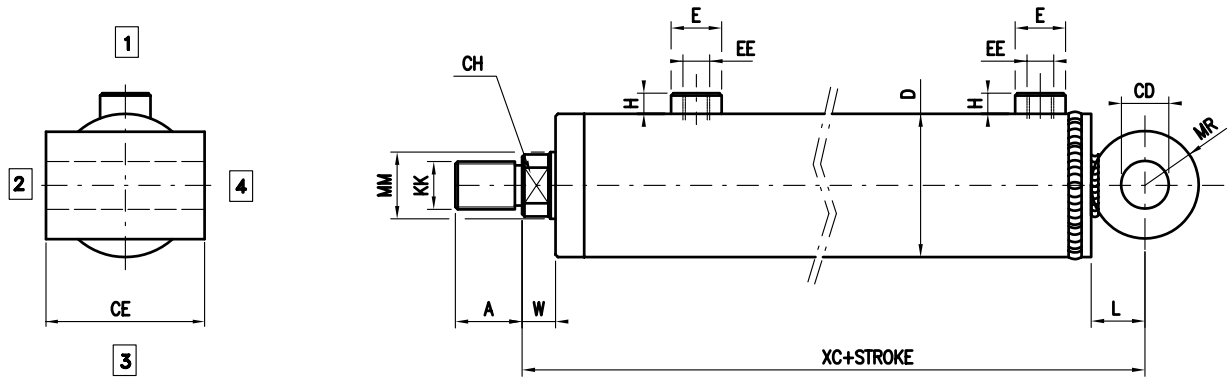


EBB: (BASE RING WELDED)

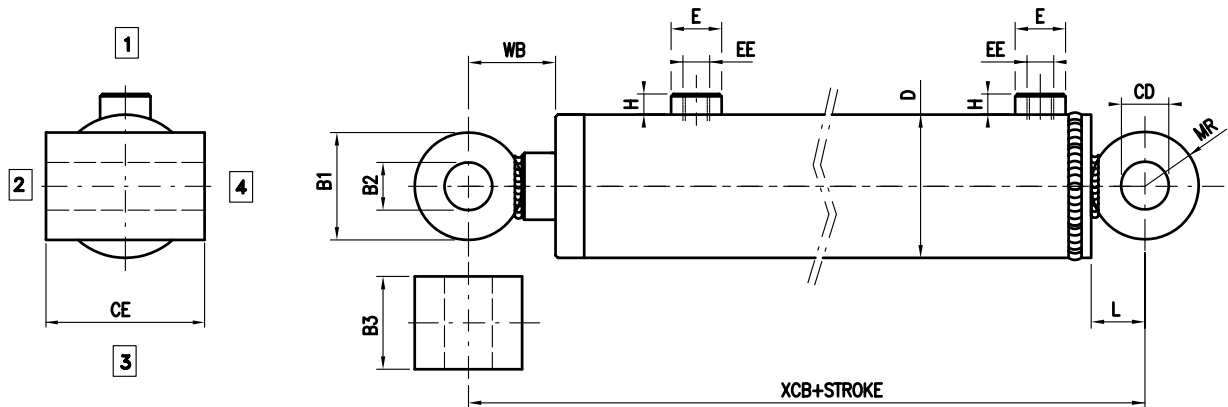


EBN: (BASE JOINT WELDED)

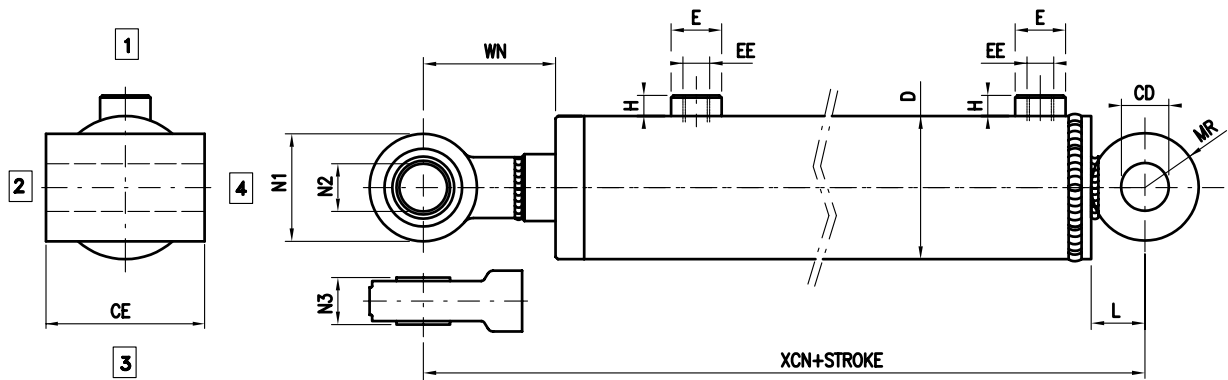
Bore	MM Rod	CH	KK	A	B1	B2	B3	D	E	EE	H	N1	N2	N3	W	WB	WN	ZJ	ZJB	ZJN
40	20	18	M16x1,5	22	40	20,5	40	50	22	1/4"	16	53	20	15	13	42	60	121	150	168
	25	22	M20x1,5	28																
50	25	22	M20x1,5	28	40	20,5	40	60	26	3/8"	17	53	20	15	14	42	60	132	160	178
	30	24	M20x1,5	28																
60	30	24	M20x1,5	28	50	25,5	45	70	26	3/8"	17	64	25	20	16	48	68	153	185	205
	35	29	M27x2	36																
70	35	29	M27x2	36	50	30,5	55	80	26	3/8"	17	73	30	22	16	48	74	153	185	211
	40	34	M27x2	36																
80	40	34	M27x2	36	50	30,5	55	95	30	1/2"	18	73	30	22	18	50	76	176	208	234
	50	44	M33x2	45																
100	50	44	M33x2	45	70	40,25	70	115	30	1/2"	18	92	40	28	20	57	94	210	250	284
	60	52	M42x2	56																



OCM: (EYE HINGE MALE TREAD)

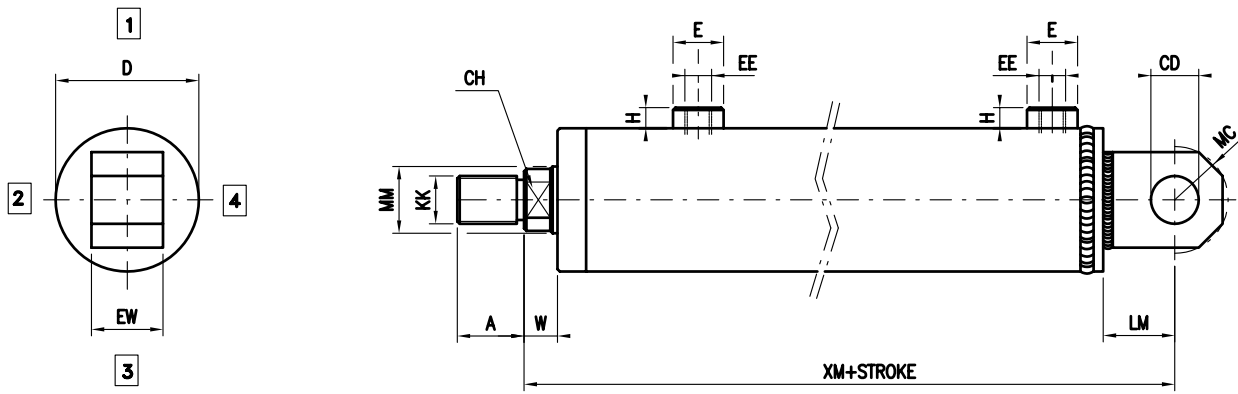


OCB: (EYE HINGE RING WELDED)

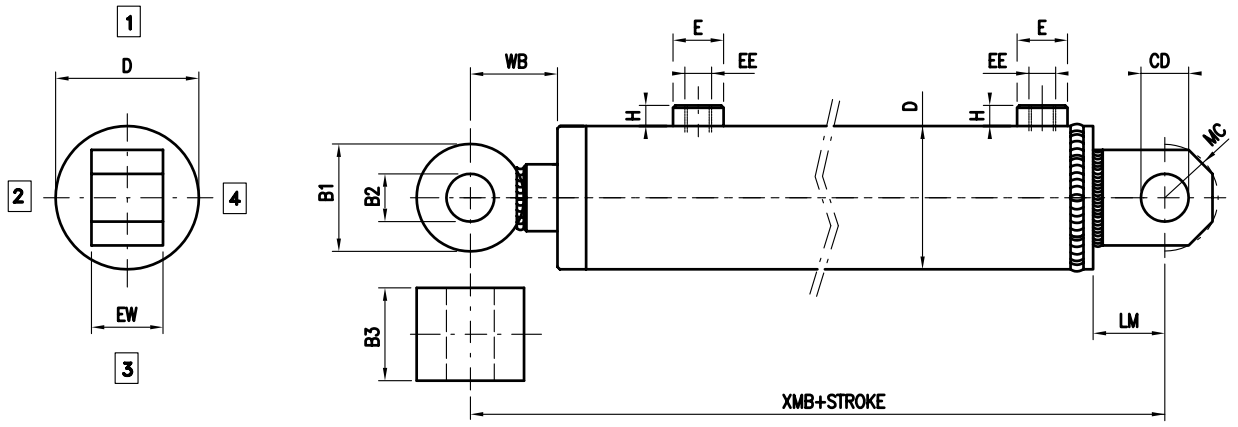


OCN: (EYE HINGE JOINT WELDED)

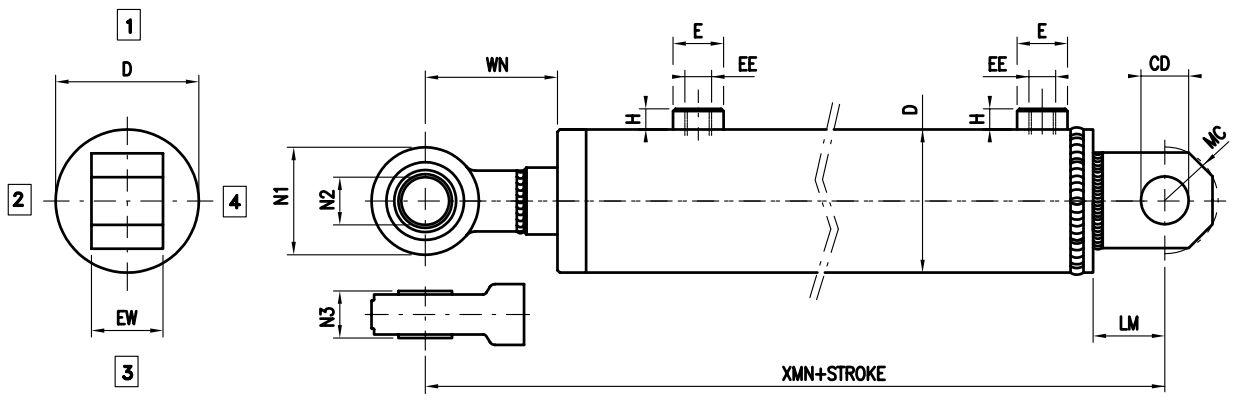
Bore	MM Rod	CH	KK	A	B1	B2	B3	CD	CE	D	E	EE	H	L	MR	N1	N2	N3	W	WB	WN	XC	XCB	XCN
40	20	18	M16x1,5	22	40	20,5	40	20,25	70	50	22	1/4"	16	20	20	53	20	15	13	42	60	141	170	188
	25	22	M20x1,5	28																				
50	25	22	M20x1,5	28	40	20,5	40	20,25	70	60	26	3/8"	17	20	20	53	20	15	14	42	60	152	180	198
	30	24	M20x1,5	28																				
60	30	24	M20x1,5	28	50	25,5	45	25,25	80	70	26	3/8"	17	25	25	64	25	20	16	48	68	178	210	230
	35	29	M27x2	36																				
70	35	29	M27x2	36	50	30,5	55	30,25	110	80	26	3/8"	17	30	30	73	30	22	16	48	74	183	215	241
	40	34	M27x2	36																				
80	40	34	M27x2	36	50	30,5	55	30,25	110	95	30	1/2"	18	30	30	73	30	22	18	50	76	206	238	264
	50	44	M33x2	45																				
100	50	44	M33x2	45	70	40,25	70	40,25	130	115	30	1/2"	18	35	35	92	40	28	20	57	94	245	285	319
	60	52	M42x2	56																				



CMM: (MALE HINGE MALE TREAD)

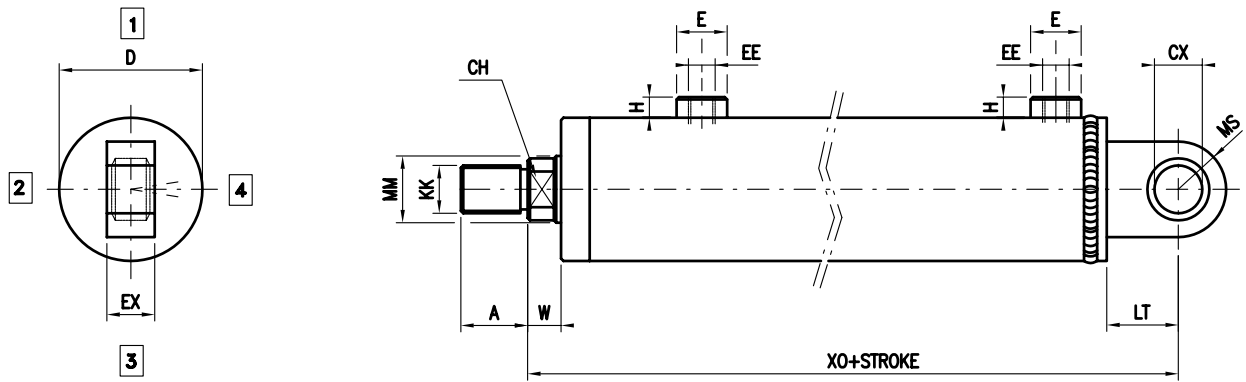


CMB: (MALE HINGE RING WELDED)

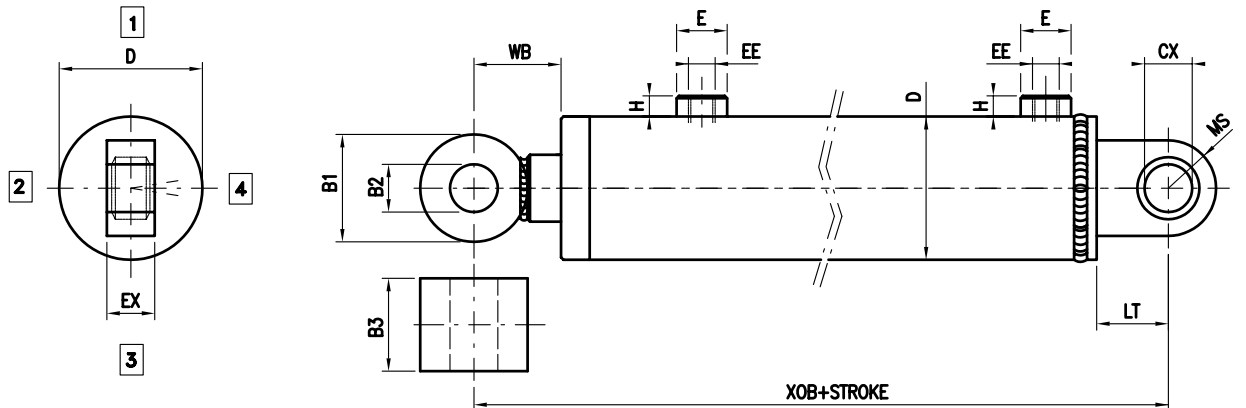


CMN: (MALE HINGE JOINT WELDED)

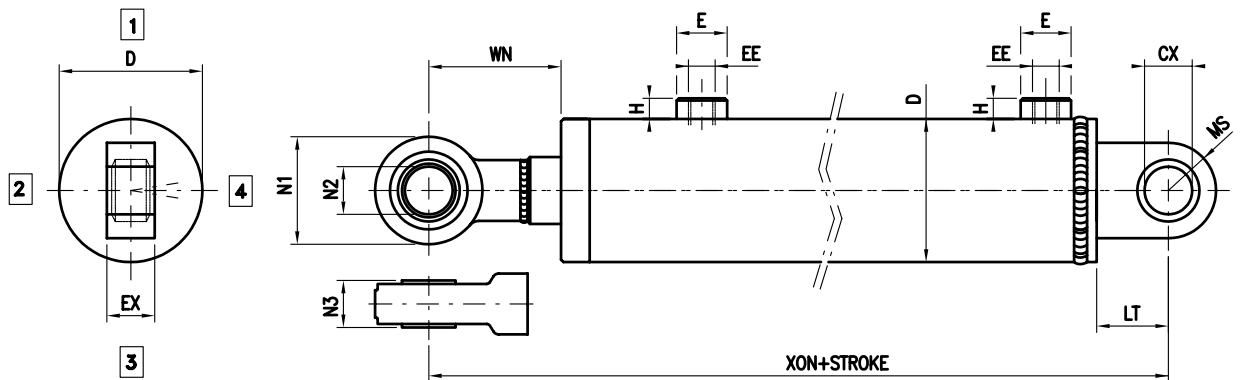
Bore	MM Rod	CH	KK	A	B1	B2	B3	CD	D	E	EE	EW	H	LM	MC	N1	N2	N3	W	WB	WN	XM	XMB	XMN
40	20	18	M16x1,5	22	40	20,5	40	20,25	50	22	1/4"	25	16	30	26	53	20	15	13	42	60	151	180	198
	25	22	M20x1,5	28																				
50	25	22	M20x1,5	28	40	20,5	40	20,25	60	26	3/8"	25	17	30	26	53	20	15	14	42	60	162	190	208
	30	24	M20x1,5	28																				
60	30	24	M20x1,5	28	50	25,5	45	25,25	70	26	3/8"	30	17	35	30	64	25	20	16	48	68	188	220	240
	35	29	M27x2	36																				
70	35	29	M27x2	36	50	30,5	55	30,25	80	26	3/8"	35	17	45	35	73	30	22	16	48	74	198	230	256
	40	34	M27x2	36																				
80	40	34	M27x2	36	50	30,5	55	30,25	95	30	1/2"	35	18	45	35	73	30	22	18	50	76	221	253	279
	50	44	M33x2	45																				
100	50	44	M33x2	45	70	40,25	70	40,25	115	30	1/2"	56	18	55	42	92	40	28	20	57	94	265	305	339
	60	52	M42x2	56																				



CSM: (JOINT HINGE MALE TREAD)

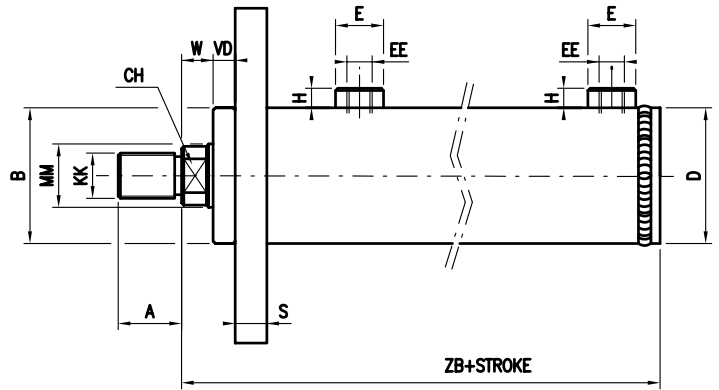
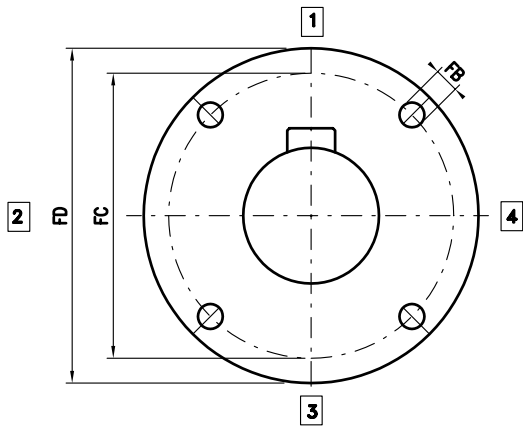


CSB: (JOINT HINGE RING WELDED)

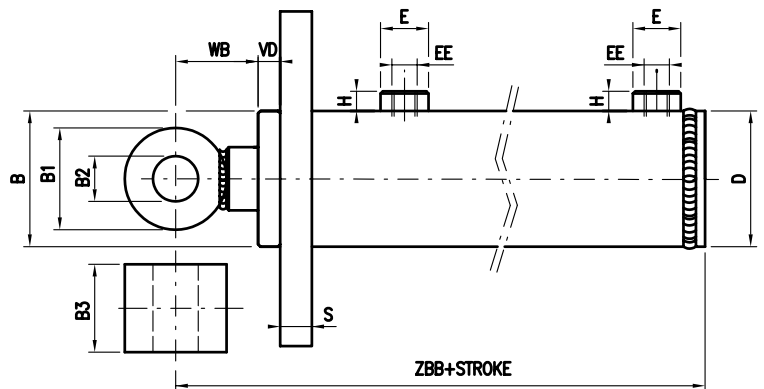
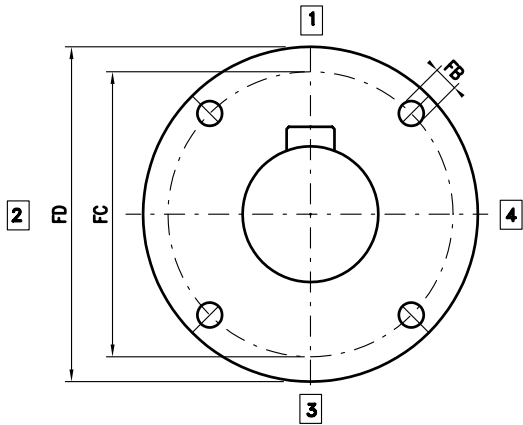


CSN: (JOINT HINGE JOINT WELDED)

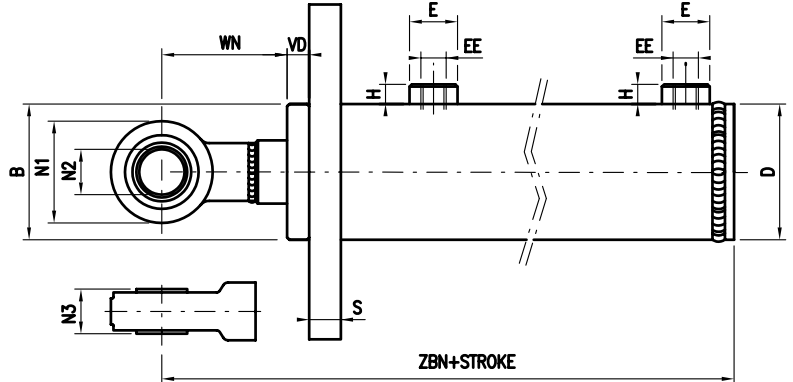
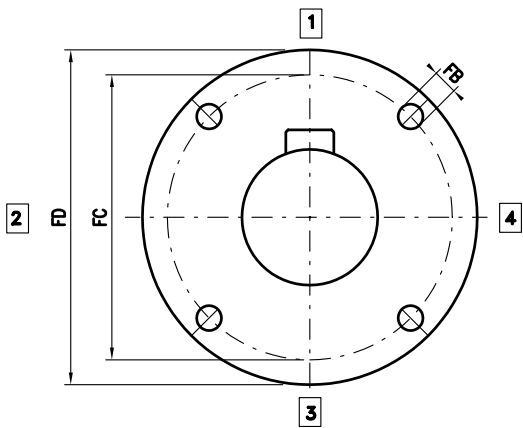
Bore	MM Rod	CH	KK	A	B1	B2	B3	CX	D	E	EE	EX	H	LT	MS	N1	N2	N3	W	WB	WN	XO	XOB	XON
40	20	18	M16x1,5	22	40	20,5	40	20	50	22	1/4"	19	16	38	25	53	20	15	13	42	60	159	188	206
	25	22	M20x1,5	28																				
50	25	22	M20x1,5	28	40	20,5	40	20	60	26	3/8"	19	17	38	25	53	20	15	14	42	60	170	198	216
	30	24	M20x1,5	28																				
60	30	24	M20x1,5	28	50	25,5	45	25	70	26	3/8"	23	17	45	27,5	64	25	20	16	48	68	198	230	250
	35	29	M27x2	36																				
70	35	29	M27x2	36	50	30,5	55	30	80	26	3/8"	28	17	51	32,5	73	30	22	16	48	74	204	236	262
	40	34	M27x2	36																				
80	40	34	M27x2	36	50	30,5	55	30	95	30	1/2"	28	18	51	32,5	73	30	22	18	50	76	224	259	285
	50	44	M33x2	45																				
100	50	44	M33x2	45	70	40,25	70	40	115	30	1/2"	35	18	69	50	92	40	28	20	57	94	279	319	353
	60	52	M42x2	56																				



FAM: (FRONT FLANGE MALE TREAD)

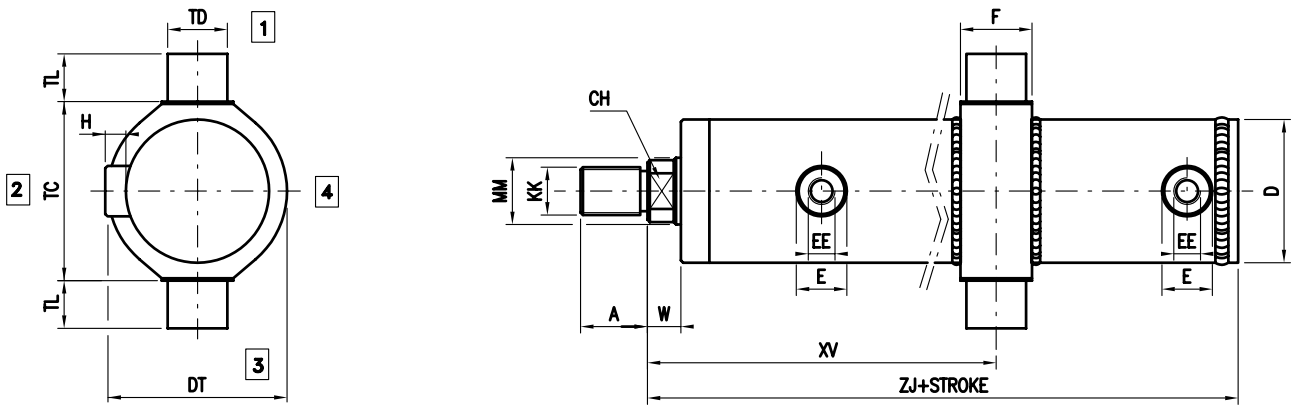


FAB: (FRONT FLANGE RING WELDED)

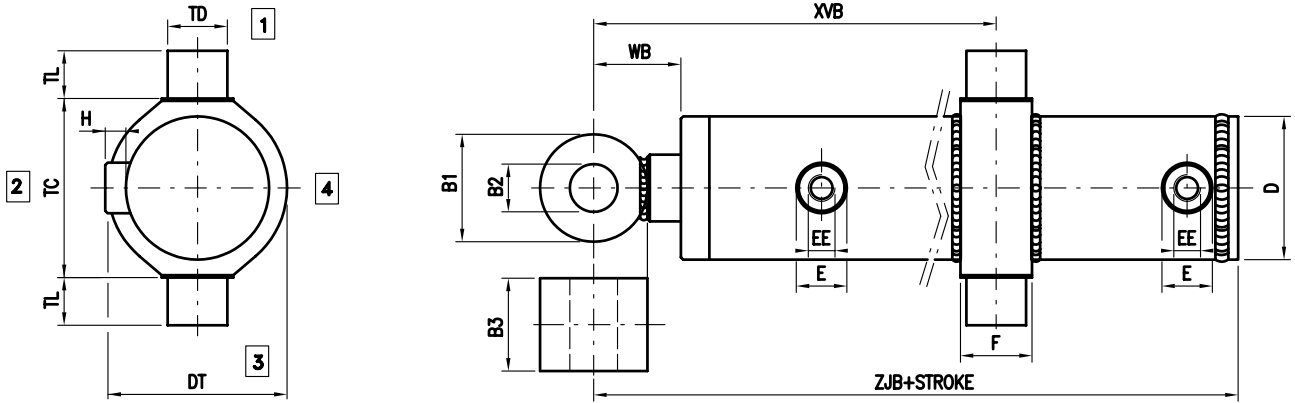


FAN: (FRONT FLANGE JOINT WELDED)

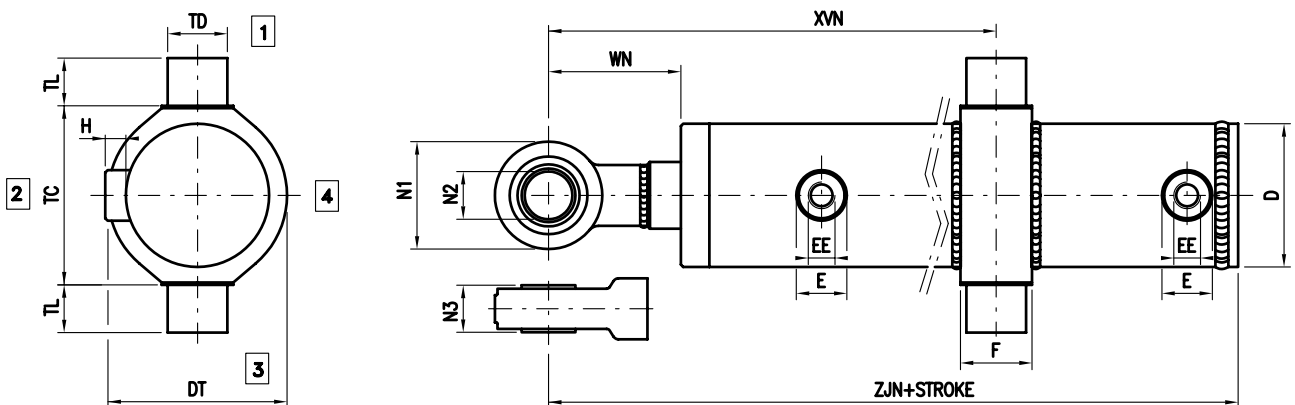
Bore	MM Rod	CH	KK	A	B	B1	B2	B3	D	E	EE	FB	FC	FD	H	N1	N2	N3	S	VD	W	WB	WN	ZB	ZBB	ZBN
40	20	18	M16x1,5	22	49	40	20,5	40	50	22	1/4"	11	87	109	20	53	20	15	12,5	8	13	42	60	123	152	170
	25	22	M20x1,5	28	59	40	20,5	40	60	26	3/8"	13	105	128	20	53	20	15	14,5	8	14	42	60	134	162	180
50	25	22	M20x1,5	28	69	50	25,5	45	70	26	3/8"	13	117	142	25	64	25	20	16,5	10	16	48	68	156	188	208
	30	24	M20x1,5	28	79	50	30,5	55	80	26	3/8"	15	127	162	30	73	30	22	16,5	10	16	48	74	156	188	214
60	30	24	M20x1,5	28	94	50	30,5	55	95	30	1/2"	17	149	181	30	73	30	22	18,5	10	18	50	76	178	210	236
	35	29	M27x2	36	114	70	40,25	70	115	30	1/2"	17 n°6	162	194	35	92	40	28	24,5	12	20	57	94	210	250	284
70	35	29	M27x2	36	114	70	40,25	70	115	30	1/2"	17 n°6	162	194	35	92	40	28	24,5	12	20	57	94	210	250	284
	40	34	M27x2	36	114	70	40,25	70	115	30	1/2"	17 n°6	162	194	35	92	40	28	24,5	12	20	57	94	210	250	284
80	40	34	M27x2	36	114	70	40,25	70	115	30	1/2"	17 n°6	162	194	35	92	40	28	24,5	12	20	57	94	210	250	284
	50	44	M33x2	45	114	70	40,25	70	115	30	1/2"	17 n°6	162	194	35	92	40	28	24,5	12	20	57	94	210	250	284
100	50	44	M33x2	45	114	70	40,25	70	115	30	1/2"	17 n°6	162	194	35	92	40	28	24,5	12	20	57	94	210	250	284
	60	52	M42x2	56	114	70	40,25	70	115	30	1/2"	17 n°6	162	194	35	92	40	28	24,5	12	20	57	94	210	250	284



OIM: (INTERMEDIATE TRUNNION MALE TREAD)



OIB: (INTERMEDIATE TRUNNION RING WELDED)



OIN: (INTERMEDIATE TRUNNION JOINT WELDED)

Bore	MM Rod	CH	KK	A	B1	B2	B3	D	DT	E	EE	H	N1	N2	N3	TC	TD	TL	XV MIN	XV MAX	XVB MIN	XVB MAX	XVN MIN	XVN MAX	W	WB	WN	ZJ	ZJB	ZJN
40	20	18	M16x1,5	22	40	20,5	40	50	65	22	1/4"	20	53	20	15	70	20	20	100	50	129	79	147	97	13	42	60	121	150	168
	25	22	M20x1,5	28	40	20,5	40	60	75	26	3/8"	20	53	20	15	80	25	25	110	52	138	80	156	98	14	42	60	132	160	178
50	25	22	M20x1,5	28	40	20,5	40	60	75	26	3/8"	20	53	20	15	80	25	25	110	52	138	80	156	98	14	42	60	132	160	178
	30	24	M20x1,5	28	40	20,5	40	60	75	26	3/8"	20	53	20	15	80	25	25	110	52	138	80	156	98	14	42	60	132	160	178
60	30	24	M20x1,5	28	50	25,5	45	70	90	26	3/8"	25	64	25	20	100	30	30	120	62	152	94	172	114	16	48	68	153	185	205
	35	29	M27x2	36	50	25,5	45	70	90	26	3/8"	25	64	25	20	100	30	30	120	62	152	94	172	114	16	48	68	153	185	205
70	35	29	M27x2	36	50	30,5	55	80	100	26	3/8"	30	73	30	22	110	35	35	125	65	157	99	183	123	16	48	74	153	185	211
	40	34	M27x2	36	50	30,5	55	80	100	26	3/8"	30	73	30	22	110	35	35	125	65	157	99	183	123	16	48	74	153	185	211
80	40	34	M27x2	36	50	30,5	55	95	115	30	1/2"	30	73	30	22	115	40	40	140	75	172	107	198	133	18	50	76	176	208	234
	50	44	M33x2	45	50	30,5	55	95	115	30	1/2"	30	73	30	22	115	40	40	140	75	172	107	198	133	18	50	76	176	208	234
100	50	44	M33x2	45	70	40,25	70	115	145	30	1/2"	35	92	40	28	145	50	50	172	95	209	132	246	169	20	57	94	210	250	285
	60	52	M42x2	56	70	40,25	70	115	145	30	1/2"	35	92	40	28	145	50	50	172	95	209	132	246	169	20	57	94	210	250	285