

# Hall-push button HD



The hall-push button impressed by its durability and versatility. It is available in three basic versions. By combining different lighting options, colours and symbols, it is possible to customize.

## Technical data

Mechanical life	10 million operating cycles
Operation temperature	-40°C til +85°C
Degree of protection	IP67



2

		HD1	-2	-1	-1	-1	-E0111	-X
<b>Basic unit</b>								
HD1	Hall-push button digital with bellow							
HD2	Hall-push button digital without bellow							
HD3	Hall-push button digital, flat mounting without bellow							
HD4	Hall-push button digital without bellow, actuator convex							
HD5	Hall-push button digital, flat mounting without bellow, actuator convex							
<b>Illumination</b>								
1	Unlighted							
2	Night light white, U_LED=4,5 - 5,5 V							
3	Functional lighting 2-coloured red-green (single shiftable) U_LED=4,5 - 5,5 V							
4	Functional lighting 2-coloured red-white (single shiftable) U_LED=4,5 - 5,5 V							
5	Functional lighting 2-coloured green-white (single shiftable) U_LED=4,5 - 5,5 V							
<b>Actuator colour</b>								
1	Transparent							
2	Black*							
3	White*							
4	Yellow*							
5	Green*							
6	Blue*							
7	Red*							
8	Orange*							
9	Grey*							
<i>*Only possible by HD4 and HD5!</i>								
<b>Icon platelets</b>								
0	Without icon platelets (only for HD4 and HD5)							
1	White transparent* (Print on back side possible, thereby the print is resistant to abrasion!)							
2	White*							
3	Yellow*							
4	Green*							
5	Blue*							
6	Black*							
7	Red*							
8	Orange*							
<i>*Not possible with HD4 and HD5!</i>								

Technical details may vary based on configuration or application! Technical data subject to change without notice!

HD1    -2    -1    -1    -1    -E0111    -X

## Symbol

- 1 Without
- 2 Buzzer\*
- 3 Arrow up\*
- 4 Arrow down\*
- 5 Turtle\*
- 6 Rabbit\*
- X Custom-made\*

\*Only possible by HD1 til HD3!

\*More Symbols on request!

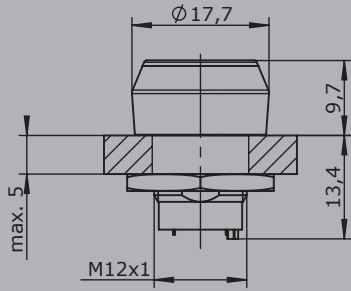
## Interface

- E0101 Push button signal not redundant  $U_b=4,5 - 5,5$  V DC
- E0111 Push button signal redundant  $U_b=4,5 - 5,5$  V DC
- E0201 Push button signal not redundant  $U_b=4 - 32$  V DC
- E0211 Push button signal redundant  $U_b=4 - 32$  V DC
- 0 Energy safe I (Hall) max. = 3,2 mA (limited)
- 1 Possible for optocoupler and PLC
- 2 Power switch (Open Drain)  $I_{Hallmax}= 25$  mA

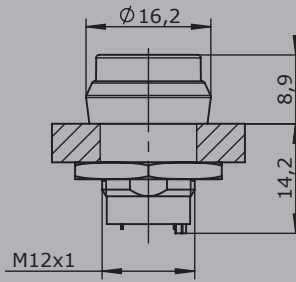
## Special model

- X Special / customer specified

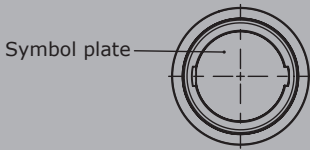
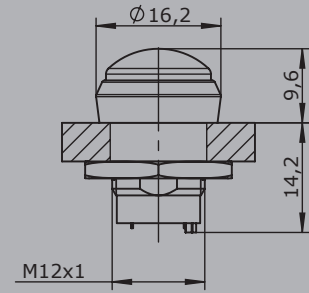
Edition:  
HD1



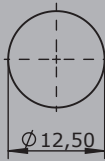
Edition:  
HD2



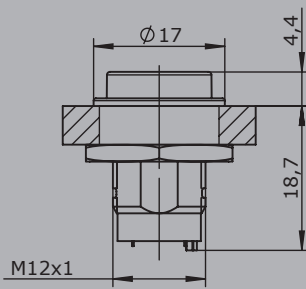
Edition:  
HD4



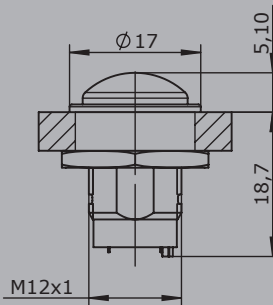
Hole pattern  
HD1, HD2, HD4



Edition:  
HD3



Edition:  
HD5



Hole pattern  
HD3, HD5

