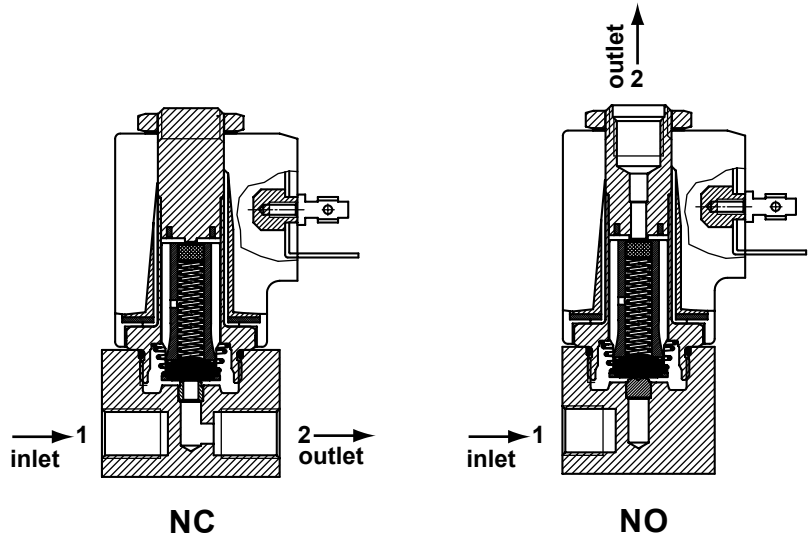


direct operated solenoid valves

coil 31 mm

| general information      |                  |
|--------------------------|------------------|
| ambient temperature      | - 10°C to + 50°C |
| response time            | 6 - 18 ms        |
| mounting                 | in any position  |
| standard seal materials* | NBR, FPM, EPDM   |
| dimensions               | see page 2/2     |
| coil data                | see page 2/2     |
| connector data           | see page 2/2     |

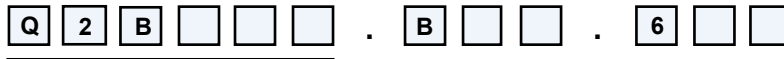


\* other seal materials on request

| function                            | symbol | orif. mm | *Kv | pressure range (bar) |         |         | nominal power |         | TABLE A<br>main code |               |
|-------------------------------------|--------|----------|-----|----------------------|---------|---------|---------------|---------|----------------------|---------------|
|                                     |        |          |     | min.                 | max. DC | max. AC | Watt DC       | V.A. AC |                      |               |
|                                     |        |          |     |                      |         |         |               | inr.    |                      | hol           |
| <b>2/2 normally closed (NC)</b><br> |        | 0.8      | 0.5 | 0                    | 60      | 80      | 10            | 21.5    | 13.5                 | <b>Q2B108</b> |
|                                     |        | 1.2      | 1.3 | 0                    | 45      | 70      | 10            | 21.5    | 13.5                 | <b>Q2B112</b> |
|                                     |        | 1.6      | 1.7 | 0                    | 35      | 60      | 10            | 21.5    | 13.5                 | <b>Q2B116</b> |
|                                     |        | 2.4      | 3.5 | 0                    | 15      | 30      | 10            | 21.5    | 13.5                 | <b>Q2B124</b> |
|                                     |        | 3.0      | 4.5 | 0                    | 10      | 18      | 10            | 21.5    | 13.5                 | <b>Q2B130</b> |
| <b>2/2 normally open (NO)</b><br>   |        | 0.8      | 0.5 | 0                    | 40      | 40      | 10            | 21.5    | 13.5                 | <b>Q2B208</b> |
|                                     |        | 1.2      | 1.1 | 0                    | 35      | 35      | 10            | 21.5    | 13.5                 | <b>Q2B212</b> |
|                                     |        | 1.6      | 1.4 | 0                    | 20      | 20      | 10            | 21.5    | 13.5                 | <b>Q2B216</b> |
|                                     |        | 2.4      | 3.0 | 0                    | 10      | 10      | 10            | 21.5    | 13.5                 | <b>Q2B224</b> |
|                                     |        | 3.0      | 3.5 | 0                    | 8       | 8       | 10            | 21.5    | 13.5                 | <b>Q2B230</b> |

\*l/min. of water with ΔP of 1 bar

order code



| main code                |
|--------------------------|
| see table A on this page |

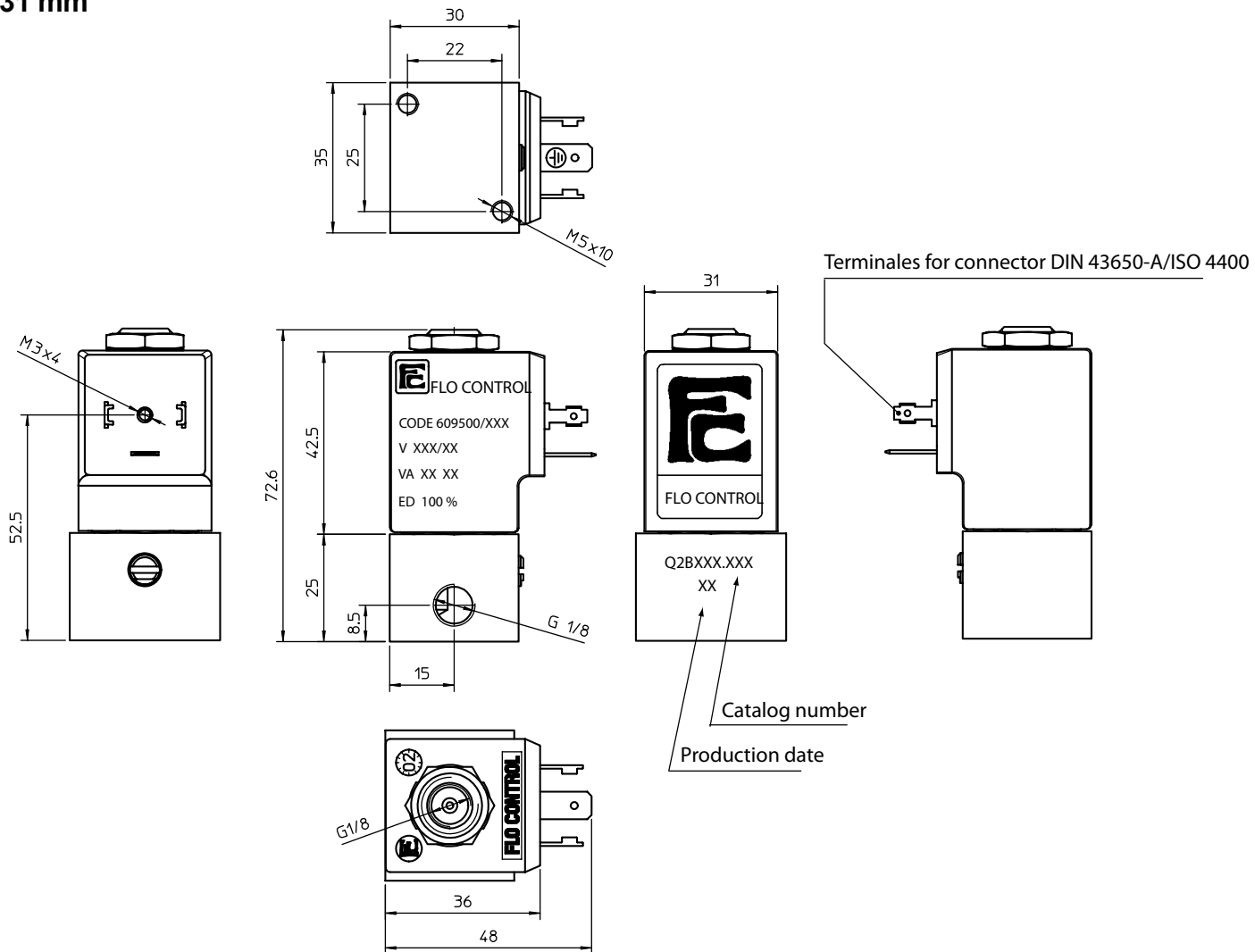
| seals |          |
|-------|----------|
| code  | material |
| B     | NBR      |
| V     | FPM      |
| E     | EPDM     |

| manual override |             |
|-----------------|-------------|
| code            | type        |
| 0               | none        |
| 1               | brass screw |
| 2               | palm button |
| 3               | push button |

| coil code               |
|-------------------------|
| see table B on page 2/2 |

direct operated solenoid valves

coil 31 mm



weight 330 g

| coil code | TABLE B   |         |         |      |
|-----------|-----------|---------|---------|------|
|           | *voltages | code    |         |      |
|           |           | ~ 50 Hz | ~ 60 Hz | = DC |
|           | 12        | -       | -       | 666  |
|           | 24        | 611     | 644     | 671  |
|           | 48        | 616     | -       | 676  |
|           | 110       | 621     | -       | 681  |
|           | 115       | -       | 653     | -    |
|           | 220       | 631     | -       | -    |
|           | 230       | 638     | 659     | -    |
|           | 380       | 640     | -       | -    |

| coil specification    |                               |
|-----------------------|-------------------------------|
| wire insulation       | class H180° C                 |
| encapsulation         | class F155° C                 |
| encapsulation mat.    | nylon                         |
| energising duration   | 100% at +20° C ambient        |
| voltage tolerance     | - 10% +15% of nominal voltage |
| *power consumption    | AC 13,5 VA - DC 10 Watt       |
| electrical connection | DIN 43650/A (2P+ earth)       |
| cable connection      | Pg 9 (for cable dia. 6-8mm)   |
| protection class      | IP 65 (with connector )       |

\* other voltages and wattages on request

connector (not included, must be ordered separately)

|      |        |
|------|--------|
| code | Z10031 |
|------|--------|

FLO CONTROL

Solenoid Valves

