

# Strobe Light BLS

Optical signalling device for indoor and outdoor applications



## Overview

The BLS Strobe Light is an optical signalling device for universal use for example as continuous, warning or alarm strobe light. The ribbed cap is available in 5 different colours and achieves an extremely wide light dispersion. The strobe light is available with a flash energy of 5 or 15 joule for continuous operation.

The plastic housing is made of impact-resistant thermoplastic and the cap consists of impact-resistant plexiglass. The cable is led into the housing through a self-sealing grommet M16 x 1.5. The arrangement of the fastening bar allows for a surface or flush-mounted wiring.

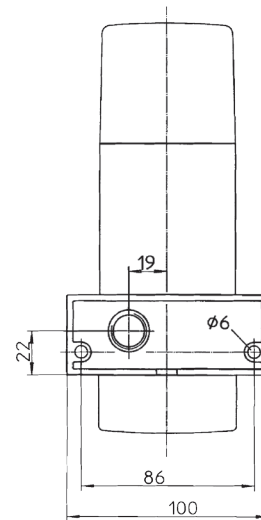
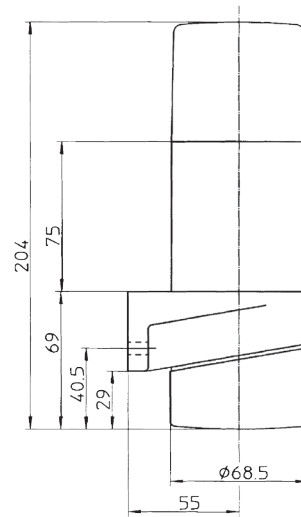
## Features

- Compensation valve to prevent condensation water
- Flash energy 5 Joule, 15 Joule
- Flash frequency 60/min.
- Continuous operation

## Specifications

Housing	Thermoplastic (ABS), impact-resistant
Colour	Light grey
Cap	Polycarbonat
Cap colour	Transparent, red, amber, green, blue
Ingress protection	IP 54 according to EN 60529
Protection class	II
Cable gland	1x self-sealing grommet M16 x 1.5
Connection terminals	Terminal capacity: 2,5 mm <sup>2</sup> single-wire 1,5 mm <sup>2</sup> fine-wire
Flash energy	BLK 30/40: 5 joule BLK 50/60: 15 joule
Flash frequency	60/min
Operating conditions	Indoors or outdoors under protective roof
Operating position	Any (preferably with cable glands facing downwards)
Operating mode	Continuous operation acc. to IEC34, DIN EN 60034-1 VDE 0530 Niveau S1
Temperature range	
Operation	-30 °C to +50 °C
Storage	-30 °C to +70 °C
Weight	Approx. 0.7 kg

## General arrangement drawing (all dimensions in mm)



## Ordering data

\* The full article number is made up by appending the colour code to the article numbers given below.

Type	Designation	Input voltage	Tolerance	Current consumption	Art. No.*
BLS 30	Strobe Light	24 VAC, 50-60 Hz	15-32 V	0.50 A	FHF 224 151 ..
BLS 30	Strobe Light	230 VAC, 50-60 Hz	-10/+6 %	0.09 A	FHF 224 152 ..
BLS 40	Strobe Light	12 VDC	9-16 V	0.80 A	FHF 224 153 ..
BLS 40	Strobe Light	24 VDC	15-32 V	0.35 A	FHF 224 154 ..
BLS 50	Strobe Light	230 VAC, 50-60 Hz	-10/+6 %	0.13 A	FHF 224 162 ..
BLS 60	Strobe Light	24 VDC	16-32 V	0.54 A	FHF 224 164 ..

transparent	01
red	02
amber	03
green	04
blue	05