

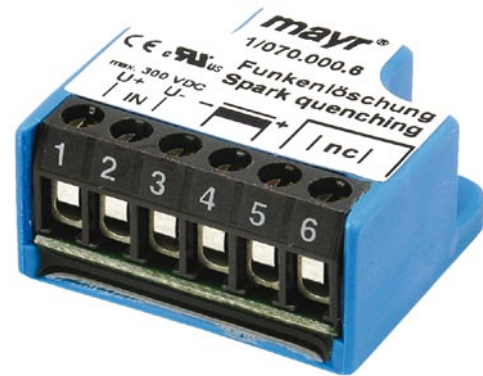
## Application

Reduces spark production on the switching contacts occurring during DC-side switch-off of inductive loads.

- Voltage limitation according to VDE0580 2000-07, Item 4.6.
- Reduction of EMC-disturbance by voltage rise limitation, suppression of switching sparks.
- Reduction of brake engagement times by a factor of 2-4 compared to free-wheeling diodes.

## Function

The spark quenching unit will absorb voltage peaks resulting from inductive load switching, which can cause damage to insulation and contacts. It limits these to 70 V and reduces the contact load. Switching products with a contact opening distance of > 3 mm are suitable for this purpose.



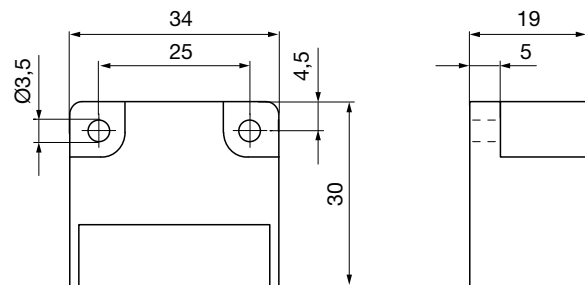
## Electrical Connection (Terminals)

- 1 (+) Input voltage
- 2 (-) Input voltage
- 3 (-) Coil
- 4 (+) Coil
- 5 Free nc terminal
- 6 Free nc terminal

## Technical Data

Input voltage	max. 300 VDC, max. 615 V <sub>peak</sub> (rectified voltage 400 VAC, 50/60 Hz)
Switch-off energy	max. 9 J/2 ms
Power dissipation	max. 0,1 Watt
Max. voltage nc terminals	250 V
Protection	IP65 / IP20 terminals
Ambient temperature	-25 °C up to +85 °C
Storage temperature	-25 °C up to +105 °C
Max. conductor connection diameter	2,5 mm <sup>2</sup> / AWG 26-12
Max. terminal tightening torque	0,5 Nm

## Dimensions (mm)



## Accessories

Mounting bracket set for 35 mm rail acc. DIN EN 60715  
Article-No. 1803201

## Order Number

— / 0 7 0 . 0 0 0 . 6



Size  
1