

M 100 Multi-jet Meter ARTIST

Master of all Classes

elster M100
artist



MID type examination certification

DE-08-MI001-PTB019

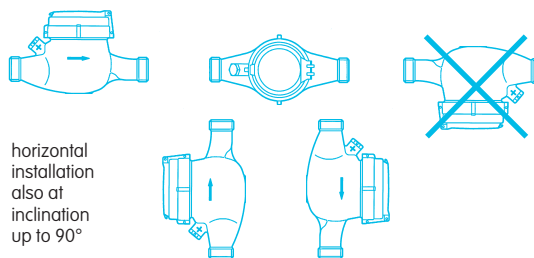
- Multi-jet wet-dial meter for cold water
- Nominal size Q_3 2.5 ... 25 m³/h
- EEC type examination certification (MID) up to R160H/R80V
- Universal mounting positions
- ELSTER conText® inscription system
- Optionally retrofittable with pulse contactors

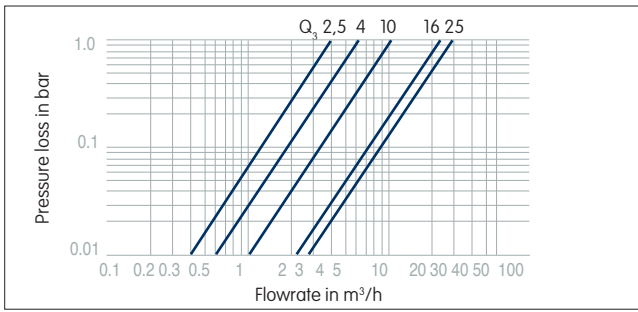
Multi-jet meter	M 100 ARTIST	MNR/MNR-KN					MNR-S/MNR-S-KN			
Meter size/nominal flowrate**	Q_3 m ³ /h	2.5	4	10	16	25	2.5	4	10	16
Nominal size	DN mm	20		25	40	50	20		25	40
	DN inches	¾		1	1½	2	¾		1	1½
Performance characteristics										
Overload flowrate	Q_4 m ³ /h	3	5	12	20	30	3	5	12	20
Transitional flowrate	Q_2^* l/h	18	30	55	100	150	18	30	55	100
Minimum flowrate	Q_1^* l/h	10	18	30	60	75	10	18	30	60
Starting flow	l/h	3.5	5.5	12	14	20	3.5	5.5	12	14
Measuring range	Q_3/Q_1 H	R160								
	Q_3/Q_1 V	R80								
Continuous load	Q_3 l/h	2 500	4 000	10 000	16 000	25 000	2 500	4 000	10 000	16 000
Temperature class MAT	T_{max} °C	30	50							
Pressure class MAP	PN bar	16								
Flow capacity at 1 bar pressure loss	m ³ /h	4.0	6.7	12.8	22	32	4.0	6.7	12.8	22

* typical performance characteristics, exceeds the demands of the MID examination certificate

** $Q_3 = 2.5$ acc. to Nominal size Qn 1.5
 $Q_3 = 4$ acc. to Nominal size Qn 2.5
 $Q_3 = 10$ acc. to Nominal size Qn 6
 $Q_3 = 16$ acc. to Nominal size Qn 10
 $Q_3 = 25$ acc. to Nominal size Qn 15

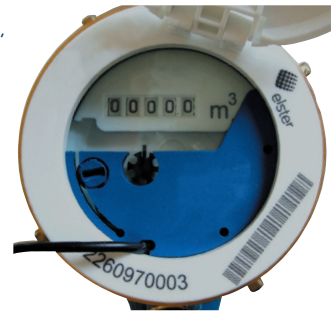
Any desired installation





Reed Disc with tamper detection

Type Reedswitch potted, protection IP 68
 max. 24 V DC,
 50 mA
 Contact load 100 Ohm
 Resistance 3 x 0.14 mm²
 Cable Ø 3.3 mm
 Pulse contact brown – white
 Tamper contact green – white
 Cable length 3 m
 Usable at MNR-KN/MNR-S-KN
 1/100 and 1/1000 pulse/litres

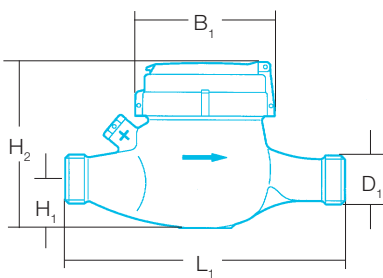


Multi-jet meter	M 100 ARTIST	MNR/MNR-KN					MNR-S/MNR-S-KN				
		Q ₃	2.5	4	10	16	25	2.5	4	10	16
Meter size/nominal flowrate**	m ³ /h										
Nominal size	DN mm		20	25	40	50		20	25	40	
	DN inches		¾	1	1 ½	2		¾	1	1 ½	

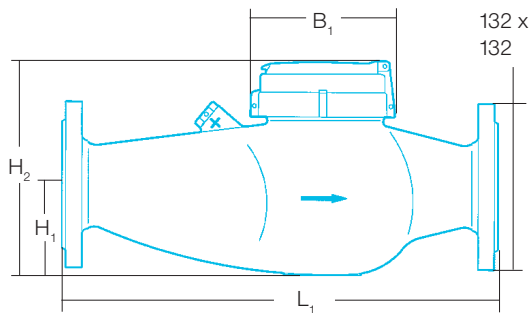
Dimensions

			G 1 B	G 1 ¼ B	G 2 B	G 2 ½ B	Flange	G 1 B	G 1 ¼ B	G 2 B	
D ₁ Meter connection thread	ISO 228/1 inches										
Connection pipe thread	ISO 7/1 inches		R ¾	R 1	R 1 ½	R 2	—	R ¾	R 1	R 1 ½	
L ₁ Meter length	mm		190	260	300	270		105	150	200	
B ₁ Width (head ring)	mm		100								
B ₂ Distance pipe axis to meter axis	mm		—	—	—	—		80	94	120	
H ₁ Centerline height	mm		31	43	46	68		—	—	—	
H ₂ Overall height	mm		115	130	153	160		135	151	195	
Weight	kg		1.5	2.5	3.7	4.5	8.5	1.8	2.6	5.5	

MNR



MNR
Flange



MNR-S

