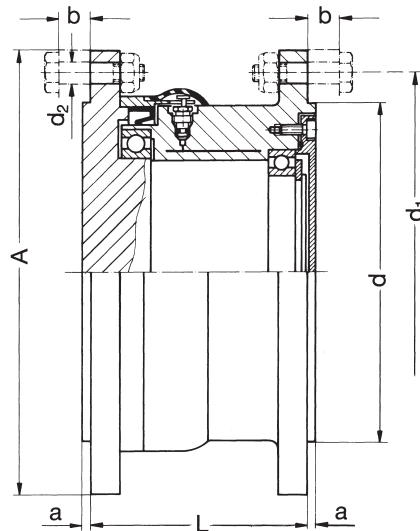


# HYGUARD® Safety Couplings

## Series BWL



Table of Dimensions No. 243 084



HYGUARD® Safety couplings of the BWL series consist of a shaft part and a bush and thus already constitute a complete coupling unit. They are equipped on both sides with connection flanges and as such, can also be used, for instance, as intermediate elements for curved tooth couplings or other connec-

tion elements. This links the advantages of the curved tooth couplings with those of the safety unit to obtain a flexible safety coupling with torque limitation. One advantage is that the coupling itself does not have to be altered. The BWL model is therefore suitable for the later conversion of existing couplings.

1) Higher speeds of request

Dimensions are subject to change due to technical progress.

Type BWL	Torque Range T ~ Nm	Speed <sup>1)</sup> n <sub>max.</sub> rpm	Dimensions								Number of Holes	Weight kg	Mass Moment of Inertia J kgm <sup>2</sup>
			d mm	d <sub>1</sub> mm	d <sub>2</sub> mm	A mm	a mm	b mm	L mm				
30	400 – 800	6700	80	102	8	118	2	12	80	6	5,9	0,0095	
40	710 – 1420	6000	95	126	9	145	2	12,5	90	6	10,6	0,027	
50	1400 – 2800	5300	110	145	9	165	2	12,5	110	8	15,6	0,048	
60	2500 – 5000	4300	135	175	11	200	2,5	15	105	8	22,6	0,096	
70	4000 – 8000	3800	150	192	11	220	3	15	110	10	27,6	0,145	
80	5600 – 11200	3600	170	210	11	240	3	15	120	12	36,5	0,223	
90	8000 – 16000	3000	190	242	14	270	4	17,5	130	10	51,1	0,403	
100	11200 – 22400	2800	200	248	14	280	4	17,5	140	12	59,1	0,5	
110	14000 – 28000	2600	220	274	17	310	4	23	150	12	75,6	0,79	
125	22400 – 44800	2200	250	302	17	340	5	23	160	16	97,5	1,16	
140	31500 – 63000	1900	280	342	20	390	5	26	170	14	134,1	2,12	
160	45000 – 90000	1800	320	386	24	435	5	29	180	14	178,8	3,64	
180	63000 – 126000	1700	360	430	24	480	5	29	195	16	234,5	5,69	
200	90000 – 180000	1500	410	486	28	545	6	34	210	16	323,3	10,14	
220	125000 – 250000	1500	450	525	28	580	8	36	230	18	378	12,71	