



### Order example

RCI - N - □

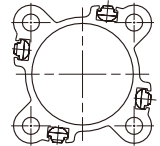
MODEL

RCI: Reed Switch  
 RCI-N: Reed Switch (NPN)  
 RCI-P: Reed Switch (PNP)  
 RNI: NPN  
 RPI: PNP

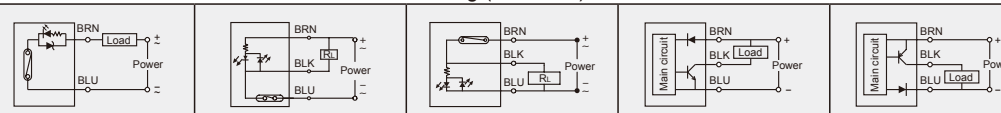
WIRE LENGTH

Blank: L=2000mm  
 1M: L=1000mm  
 QD: M8, 3 Pin connector  
 EQD: M8, 3 Pin connect  
 \* Special order is available.

### Assembling style

Cylinder type	Mounting clamp
<b>MCQI2, MCQI3, MCKQI2, MCBQI2, MCBQI3, MCJI, MCGI, MGTB, MGTU, MGTX, METB</b>	

### Specification

Model	RCI	RCI-N	RCI-P	RNI	RPI
Wiring	2 wire	3 wire		3 wire	
Switching logic	Normal open				
Switch Type	Reed switch			NPN current sinking	PNP current sourcing
Voltage range	5~240V DC/AC	10~30V DC		10~30V DC	
Current range	100mA max.	500mA max.		200mA max.	
Contact rating (*1)	10W max.			6W max.	
Current consumption	—	5 mA@24V DC max.		20 mA@24V DC max.	
Voltage drop	3.5V max.	0.1V@100mA max.		1.5V max.	
Leakage current	—	—	—	0.05mA max.	
Indicator	Red LED	Yellow LED		Red LED	Yellow LED
Cable	ø3,2C,PUR	ø3,3C,PUR		ø3,3C,PUR	
Temperature	-10~+70°C (No freezing)				
Shock (*2)	30G			50G	
Vibration (*3)	9G				
Protection classification	IEC 60529 IP67				
Protection circuit (*4)	1			2,3,4	
Weight	23 g (2m cable)				
Connect diagram					

\*1. Warning: Never exceed rating (watt=voltage×amperage). Permanent damage to sensor will occur.

\*2. Sin wave / X.Y.Z. 3 directions / 3 times each direction / 11ms each time.

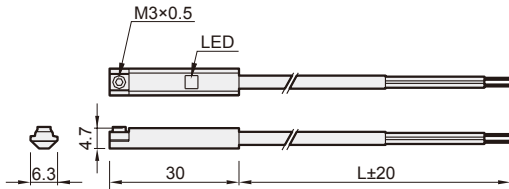
\*3. Double amplitude 1.5mm / 10Hz~55Hz~10Hz(Sweep 1min) / X.Y.Z. 3 directions / 1 hour each time.

\*4. 1=None / 2=Short-circuit / 3=Power source reverse polarity / 4=Surge suppression

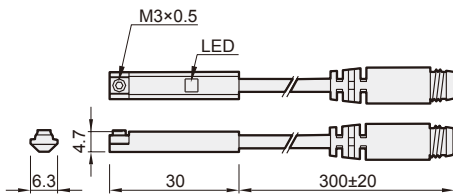
\*5. Caution for safety please refer to page 10-3-4 .

### Dimension

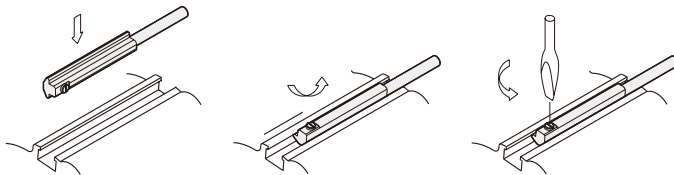
#### RCI-\*/RNI/RPI



#### RCI-\*-QD/RNI-QD/RPI-QD



### Mounting



### Wiring of the QD

- 2 wire QD wiring
- 2 wire EQD wiring
- 3 wire QD wiring

