



Digital pressure switches allow the control of pressure in a plant. Their wide display with the indication of selected functions, the possibility to choose between different electronic circuits and all their accessories, make them complete, precise and reliable devices.

**Le pressostat digital sert à contrôler la pression du système. Il dispose d'un grand écran qui permet de visualiser les fonctions sélectionnées. Il est complet, précis et fiable grâce aux différents circuits électroniques et accessoires.**

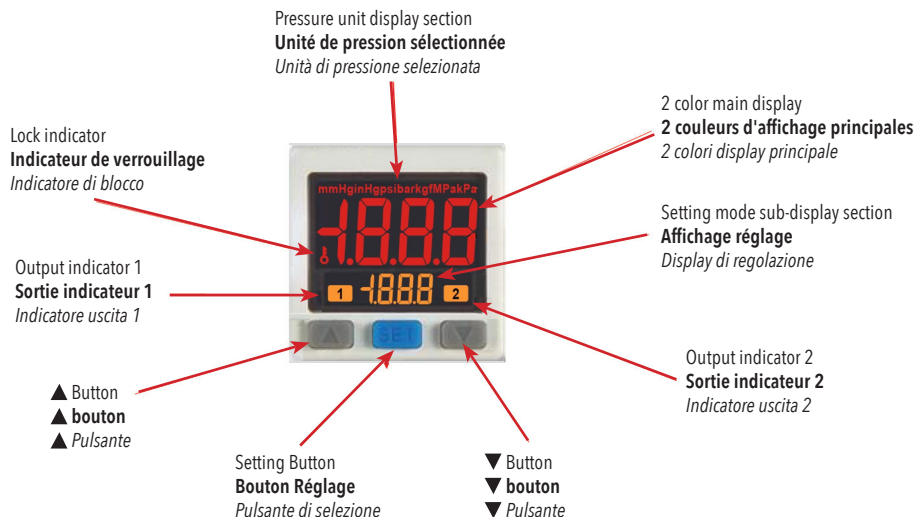
*I pressostati digitali sono dei dispositivi per il controllo della pressione di un impianto. L'ampio display con le indicazioni delle funzioni selezionate, la possibilità di scegliere fra diversi circuiti elettronici ed accessori li rendono strumenti completi, precisi ed affidabili.*

STANDARD PRODUCTS / PRODUITS STANDARD / PRODOTTI STANDARD

Code Code Codice	Type Type Tipo	Circuit Circuit Circuito
DP1181	positive pressure / <b>pression positive</b> / <i>pressione positiva</i>	NPN
DP2181	vacuum / <b>vide</b> / <i>vuoto</i>	NPN
DP3181	combine pressure / <b>pression combinée</b> / <i>pressioni combinate</i>	NPN
DP1182	positive pressure / <b>pression positive</b> / <i>pressione positiva</i>	PNP
DP2182	vacuum / <b>vide</b> / <i>vuoto</i>	PNP
DP3182	combine pressure / <b>pression combinée</b> / <i>pressioni combinate</i>	PNP

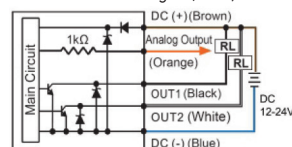
TECHNICAL DATA / DONNÉES TECHNIQUES / DATI TECNICI

Type Type Tipo	Positive pressure <b>Pression positive</b> <i>Pressioni positive</i>	Vacuum <b>Vide</b> <i>Vuoto</i>	Combine pressure <b>Pression combinée</b> <i>Pressioni combinate</i>
Pressure range / <b>Pression</b> / <i>Pressione nominale</i>	0 - 10 bar	-1,01 - 0 bar	-1 - 1 bar
Max pressure / <b>Max pression</b> / <i>Pressione massima</i>	15 bar	3 bar	3 bar
Set pressure revolution <b>Révolution de pression</b> <i>Risoluzione pressione</i>	kPa	-	-
	MPa	0.001	0.001
	kgf/cm <sup>2</sup>	0.001	0.01
	bar	0.01	0.01
	psi	0.1	0.01
	inHg	1	-
Fluid / <b>Fluide</b> / <i>fluido</i>	Filtered air, non corrosive, non fiammeble gas / <b>Air filtré, corrosif, gaz ininflammable</b> / <i>Aria filtrata, gas non infiammabili</i>		
Power supp.voltage / <b>Tension d'alimentation</b> / <i>Tensione di alimentazione</i>	12 to 24V DC -10%		
Corrent consumption / <b>Consommation de courant</b> / <i>assorbimento</i>	< 40 mA (with no load)		
Temperature range / <b>Température</b> / <i>Temperatura</i>	0° C - 50°C		
Environment / <b>Classe d'isolation</b> / <i>Classe isolamento</i>	IP40		
Port size / <b>Taille du port</b> / <i>Connessione</i>	1/8 - M5		
Weight / <b>Poids</b> / <i>Peso</i>	80 gr		

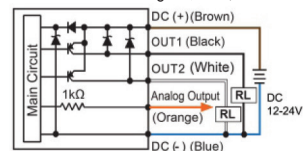


OUTPUT CIRCUIT / CIRCUIT DE SORTIE  
 CIRCUITO DI USCITA

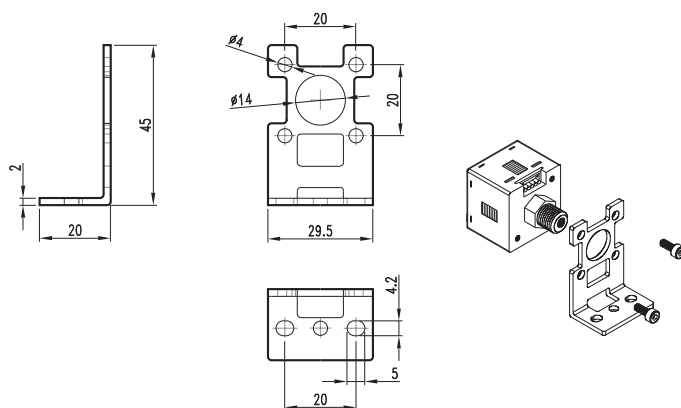
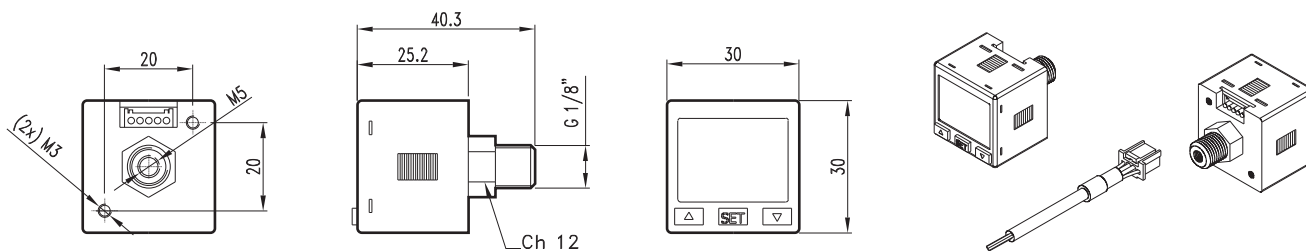
2 NPN + Analog Output (1-5V)  
**2 Sortie NPN + analogique (1-5V)**  
 2 Uscita NPN + analogica (1-5 V)



2 PNP + Analog Output (1-5V)  
**2 Sortie PNP + analogique (1-5V)**  
 2 Uscita PNP + analogica (1-5 V)

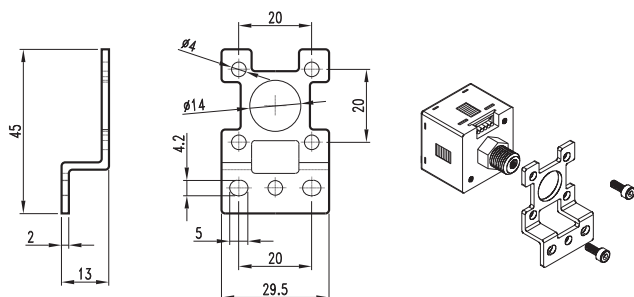


**DIMENSIONS / DIMENSIONS / DIMENSIONI**



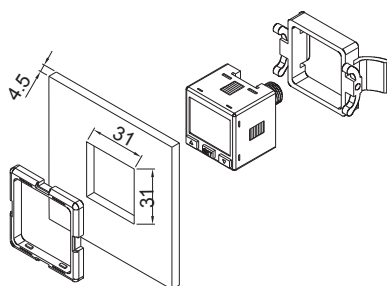
MOUNTING BRACKET L TYPE  
**SUPPORT DE MONTAGE TYPE L**  
STAFFA DI MONTAGGIO A L

CODE  
AR4313



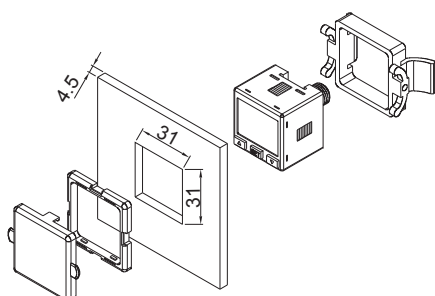
MOUNTING BRACKET S TYPE  
**SUPPORT DE MONTAGE TYPE S**  
STAFFA DI MONTAGGIO A S

CODE  
AR4314



KIT FOR PANEL MOUNTING  
**KIT DE MONTAGE POUR PANNEAU**  
KIT PER MONTAGGIO A PANNELLO

CODE  
AR4315



COMPLETE KIT FOR PANEL MOUNTING  
**KIT COMPLET POUR MONTAGE SUR PANNEAU**  
KIT COMPLETO PER MONTAGGIO A PANNELLO

CODE  
AR4316



The pressure switch allows to change the signal from pneumatic into electric.

**Le pressostat il permet de transformer un signal pneumatique en un signal électrique.**

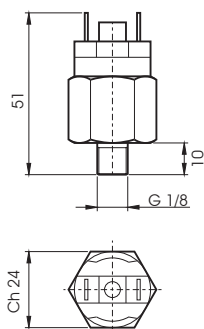
*Il pressostato permette di trasformare un segnale pneumatico in un segnale elettrico.*

**TECHNICAL DATA / DONNÉES TECHNIQUES / DATI TECNICI**

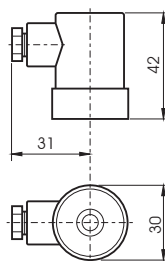
Fluid / <b>Fluide</b> / <i>Fluido</i>	Lubricated or non lubricated air / <b>Air lubrifié ou non</b> / <i>Aria con o senza lubrificazione</i>
Temperature range / <b>Température d'utilisation</b> / <i>Temperatura di esercizio</i>	-10° C / +60° C
Setting range / <b>Plage de tarage</b> / <i>Campo di taratura</i>	1 - 10ba
Tolerance at 20 C° / <b>Tolérance à 20 C°</b> / <i>Tolleranza a 20 C°</i>	0,5bar
Max tension / <b>Tension max</b> / <i>Tensione massima</i>	48V AC

**MATERIALS / MATIERES / MATERIALI**

Body / <b>Corps</b> / <i>Corpo</i>	Brass / <b>Laiton</b> / <i>Ottone</i>
Diaphragm / <b>Membrane</b> / <i>Membrana</i>	Rubber / <b>Caoutchouc</b> / <i>Gomma</i>
Electrical contacts / <b>Contacts</b> / <i>Contatti</i>	Silver plated / <b>Argent</b> / <i>Argentati</i>

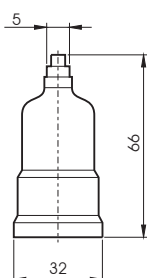


<b>CODE</b>	
<b>PR211</b>	NC / NF / NC
<b>PR212</b>	NO / NO / NA



CAP 90°  
**CAPOT 90°**  
 CAPPUCCIO 90°

<b>CODE</b>	
<b>TX0017</b>	



IN LINE CAP  
**CAPOT EN LIGNE**  
 CAPPUCCIO IN LINEA

<b>CODE</b>	
<b>TX0018</b>	