



The new pedal with integrated pneumatic valve contains important technical features making it one of the best products available on the market:

- Large interior space to hold even the most bulky shoes
- Large support base to offer maximum stability
- Metal components in the sensitive parts to ensure great sturdiness
- Wide range and versions available: 5/2 or 3/2 functions, monostable or bistable with 4mm hose connection, with or without protective cap.

La nouvelle pédale avec valve pneumatique intégrée se caractérise par des caractéristiques techniques importantes qui en font l'un des meilleurs produits disponibles sur le marché :

- Grand espace intérieur pour contenir même les chaussures les plus volumineuses
- Grande base de support pour offrir une stabilité maximale
- Composants métalliques dans les parties sensibles pour assurer une grande robustesse
- Large gamme et versions disponibles : fonctions 5/2 ou 3/2, monostable ou bistable avec raccord de tuyau 4 mm, avec ou sans capuchon de protection.

Il nuovo pedale con valvola pneumatica integrata racchiude importanti accorgimenti tecnici che ne fanno uno dei prodotti migliori sul mercato:

- Ampio spazio interno per contenere le scarpe più ingombranti
- Grande base di appoggio per offrire massima stabilità
- Componenti metallici nelle parti sensibili per garantire grande robustezza.
- Vasta gamma e versioni disponibili: funzioni 5/2 o 3/2, monostabile o bistabile con connessione tubo 4mm, con o senza calotta protettiva.

### TECHNICAL DATA / DONNÉES TECHNIQUES / DATI TECNICI

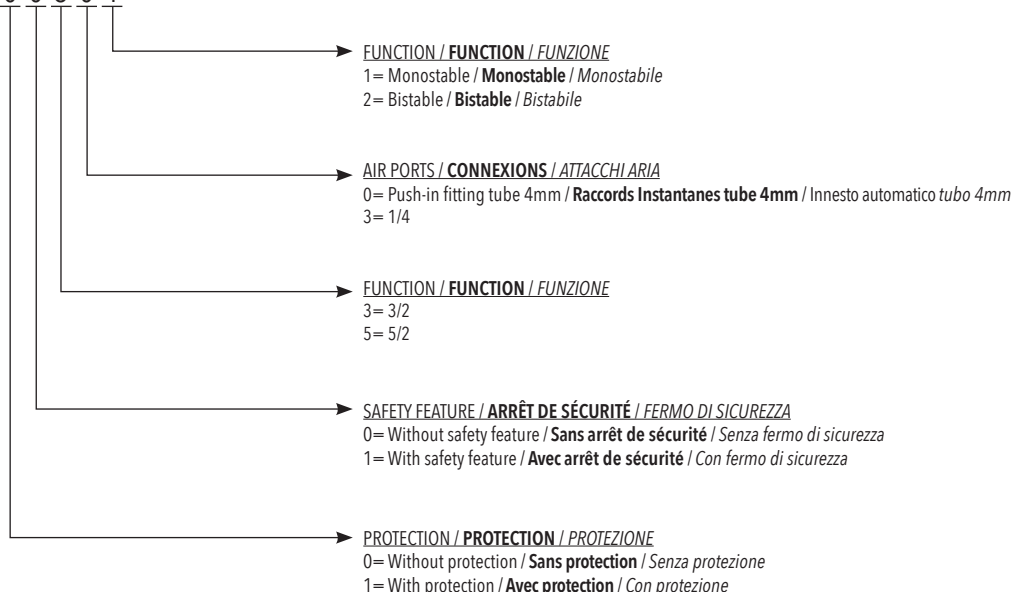
	1/4	TUBE 4
Nominal orifice / <b>Diamètre nominal</b> / Diametro nominale	7,5 mm	2,5 mm
Flow rate / <b>Débit</b> / Portata (6 bar Δp 1bar)	680 NI/min	60 NI/min
Fluid / <b>Fluide</b> / Fluido	Lubricated or non lubricated air / <b>Air lubrifié ou non</b> / Aria con o senza lubrificazione	
Temperature range / <b>Température d'utilisation</b> / Temperatura di esercizio	-10°C / +60°C	
Max operating pressure / <b>Pression max d'utilisation</b> / Pressione massima di esercizio	10 bar	

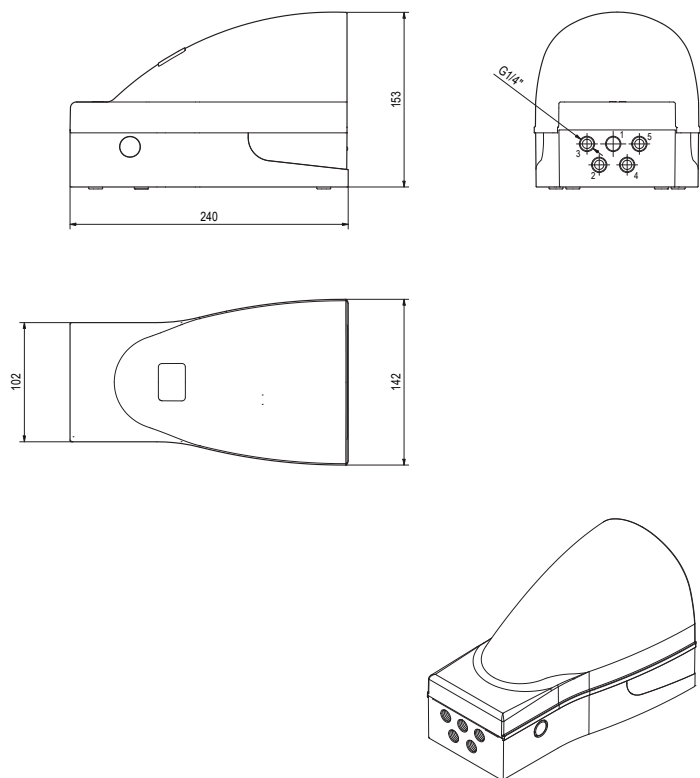
### COMPONENTS / COMPOSANTS / COMPONENTI

Protection cover / <b>Protection</b> / Protezione	Plastic / <b>Plastique</b> / Plastica
Body / <b>Corps</b> / Corpo	Aluminium / <b>Aluminium</b> / Alluminio
Spool / <b>Tiroir</b> / Spola	Nickel plated aluminium / <b>Aluminium nickelle</b> / Alluminio nichelato
Seals / <b>Joints</b> / Guarnizioni	NBR
Spring / <b>Ressort</b> / Molla	Steel / <b>Inox</b> / Inox

### ORDERING CODE / CODIFICATION / CHIAVE DI CODIFICA

V P 4 0 0 0 3 0 1

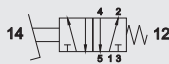




5/2 - 1/4 - WITH PROTECTION COVER  
**5/2 - 1/4 - AVEC PROTECTION**  
 5/2 - 1/4 - CON PROTEZIONE

Monostable / **Monostable** / Monostabile

CODE  
**VP40010531**



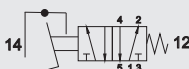
Bistable / **Bistable** / Bistabile

CODE  
**VP40010532**



Monostable with safety feature / **Monostable avec arrêt de sécurité**  
 Monostabile con fermo di sicurezza

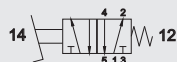
CODE  
**VP40011531**



5/2 - 1/4 - WITHOUT PROTECTION COVER  
**5/2 - 1/4 - SANS PROTECTION**  
 5/2 - 1/4 - SENZA PROTEZIONE

Monostable / **Monostable** / Monostabile

CODE  
**VP40000531**



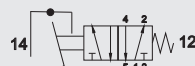
Bistable / **Bistable** / Bistabile

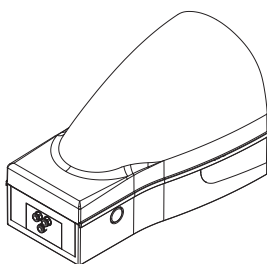
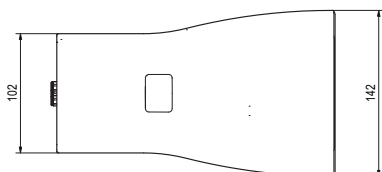
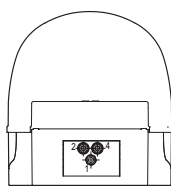
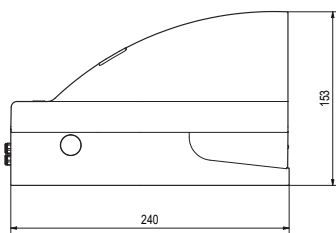
CODE  
**VP40000532**



Monostable with safety feature / **Monostable avec arrêt de sécurité**  
 Monostabile con fermo di sicurezza

CODE  
**VP40001531**

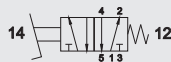




5/2 TUBE 4 - WITH PROTECTION COVER  
**5/2 TUBE 4 - AVEC PROTECTION**  
5/2 TUBO 4 - CON PROTEZIONE

Monostable / **Monostable** / Monostabile

CODE  
VP40010501



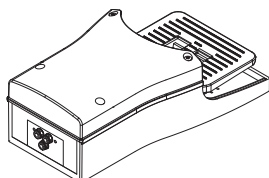
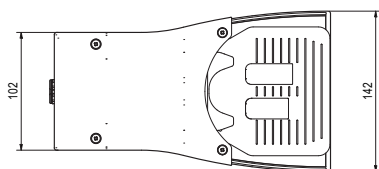
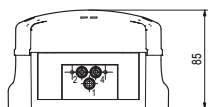
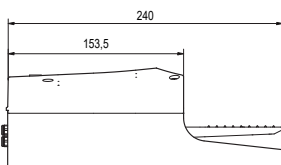
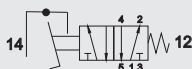
Bistable / **Bistable** / Bistabile

CODE  
VP40010502



Monostable with safety feature / **Monostable avec arrêt de sécurité**  
Monostabile con fermo di sicurezza

CODE  
VP40011501



5/2 TUBE 4 - WITHOUT PROTECTION COVER  
**5/2 TUBE 4 - SANS PROTECTION**  
5/2 TUBO 4 - SENZA PROTEZIONE

Monostable / **Monostable** / Monostabile

CODE  
VP40000501



Bistable / **Bistable** / Bistabile

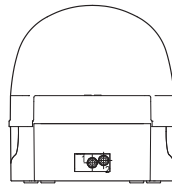
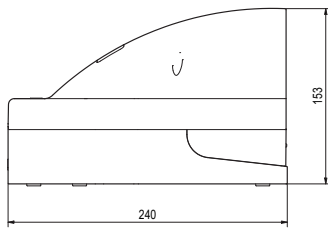
CODE  
VP40000502



Monostable with safety feature / **Monostable avec arrêt de sécurité**  
Monostabile con fermo di sicurezza

CODE  
VP40001501

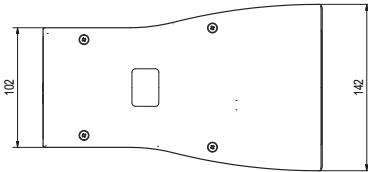
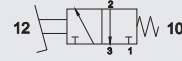




3/2 TUBE 4 - WITH PROTECTION COVER  
**3/2 TUBE 4 - AVEC PROTECTION**  
 3/2 TUBO 4 - CON PROTEZIONE

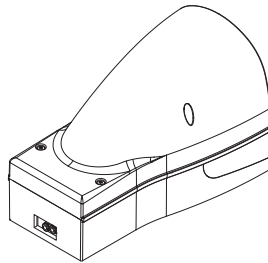
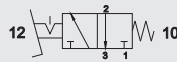
Monostable / **Monostable** / Monostabile

CODE  
**VP40010301**



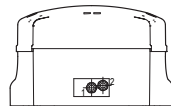
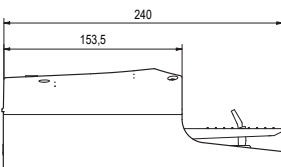
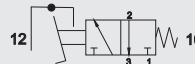
Bistable / **Bistable** / Bistabile

CODE  
**VP40010302**



Monostable with safety feature / **Monostable avec arrêt de sécurité**  
 Monostabile con fermo di sicurezza

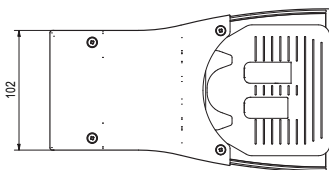
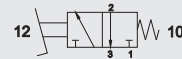
CODE  
**VP40011301**



3/2 TUBE 4 - WITHOUT PROTECTION COVER  
**3/2 TUBE 4 - SANS PROTECTION**  
 3/2 TUBO 4 - SENZA PROTEZIONE

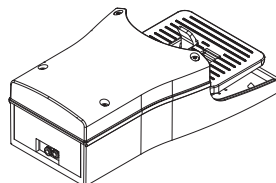
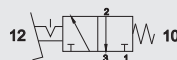
Monostable / **Monostable** / Monostabile

CODE  
**VP40000301**



Bistable / **Bistable** / Bistabile

CODE  
**VP40000302**



Monostable with safety feature / **Monostable avec arrêt de sécurité**  
 Monostabile con fermo di sicurezza

CODE  
**VP40001301**

