

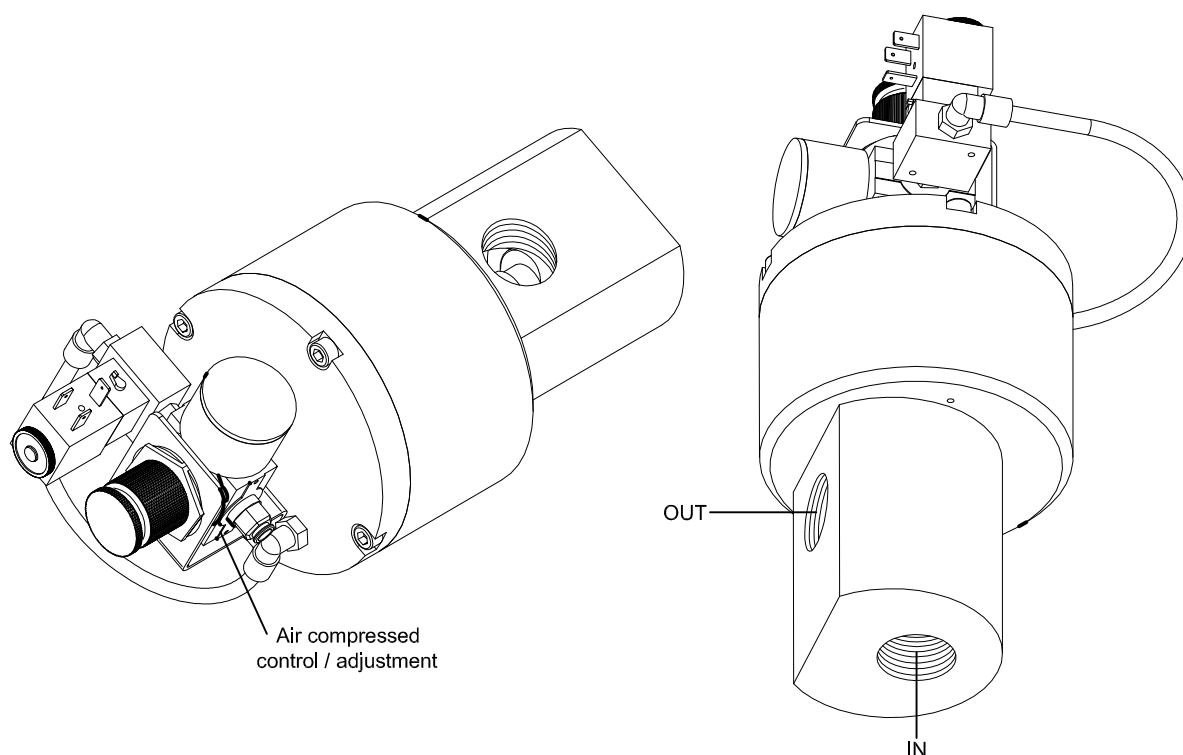
Control valve – VCP

For hydraulic oils, lubricating oils, fuel oils and cooling lubricants emulsions.



Control is with pneumatic circuit :

- ON / OFF function changes from free discharge to regulated pressure.
- Max pressure is controlled setting the pneumatic pressure.
- Pneumatic control-setting group can be mounted also remote from valve (suggested max 1 m tube).



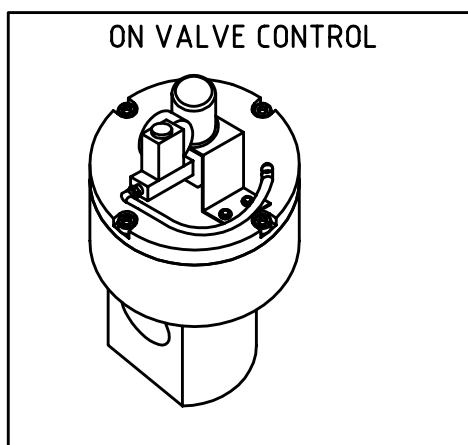
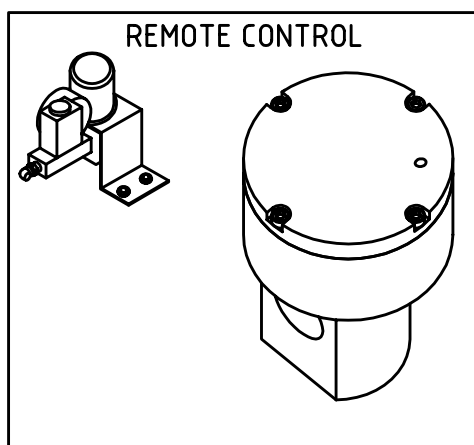
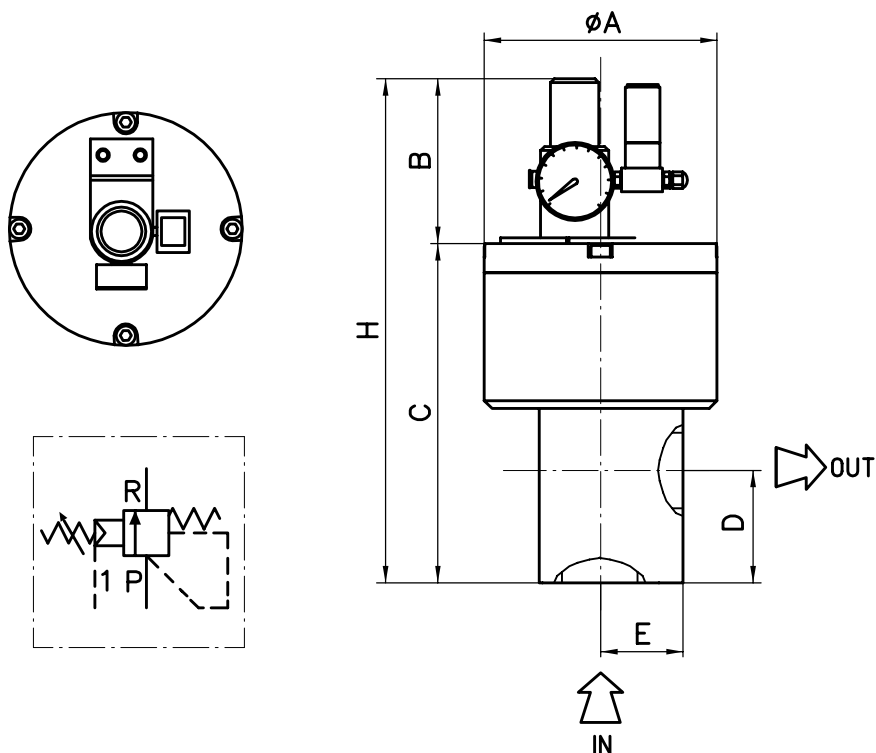
Functional characteristics standard version

	VCP22	VCP32
Delivery flow	120 l/min	250 l/min
Pressure setting	5 to 100 bar	5 to 80 bar
Ratio regulated pressure / air pressure	20/1 (5 bar air = 100 bar setting)	10/1 (8 bar air = 80 bar setting)
Electrovalve specs	24 V DC (or 48 AC), duty 100%, normally open (no supply = valve in discharge), power 2 W DC, IP 65, Actuator port G1/8".	
Fluid temperature	0 – 60 °C	
Ambient temperature	0 – 50 °C	
Weight	4.5 Kg	5.0 Kg

* Reduced pressure limits apply due to fluid viscosity and driving speed
 Consult the performance charts for the individual pump size
 For different functional characteristics, please contact our sales department

Control valve – VCP

For hydraulic oils, lubricating oils, fuel oils and cooling lubricants emulsions



ZA - STE - VCP - GB - 04-04 - 1

Dimensional chart (mm)

MODELLO	∅A	B	INGRESSO GAS	USCITA GAS	C	D	E	H
VCP#022	120	95	1"	1"	175	60	40	270
VCP#032			1 ¼"	1 ¼"	180	63	40	275

SEIM srl
Via A. Volta 17
20090 Cusago (MI) ITALY
Tel. (+39) 02.90.39.21.1
Fax (+39) 02.90.39.21.41
e-mail: seim@seim.it

www.seim.it

SEIM reserves the right to introduce dimensional changes or variation to the products of this technical data