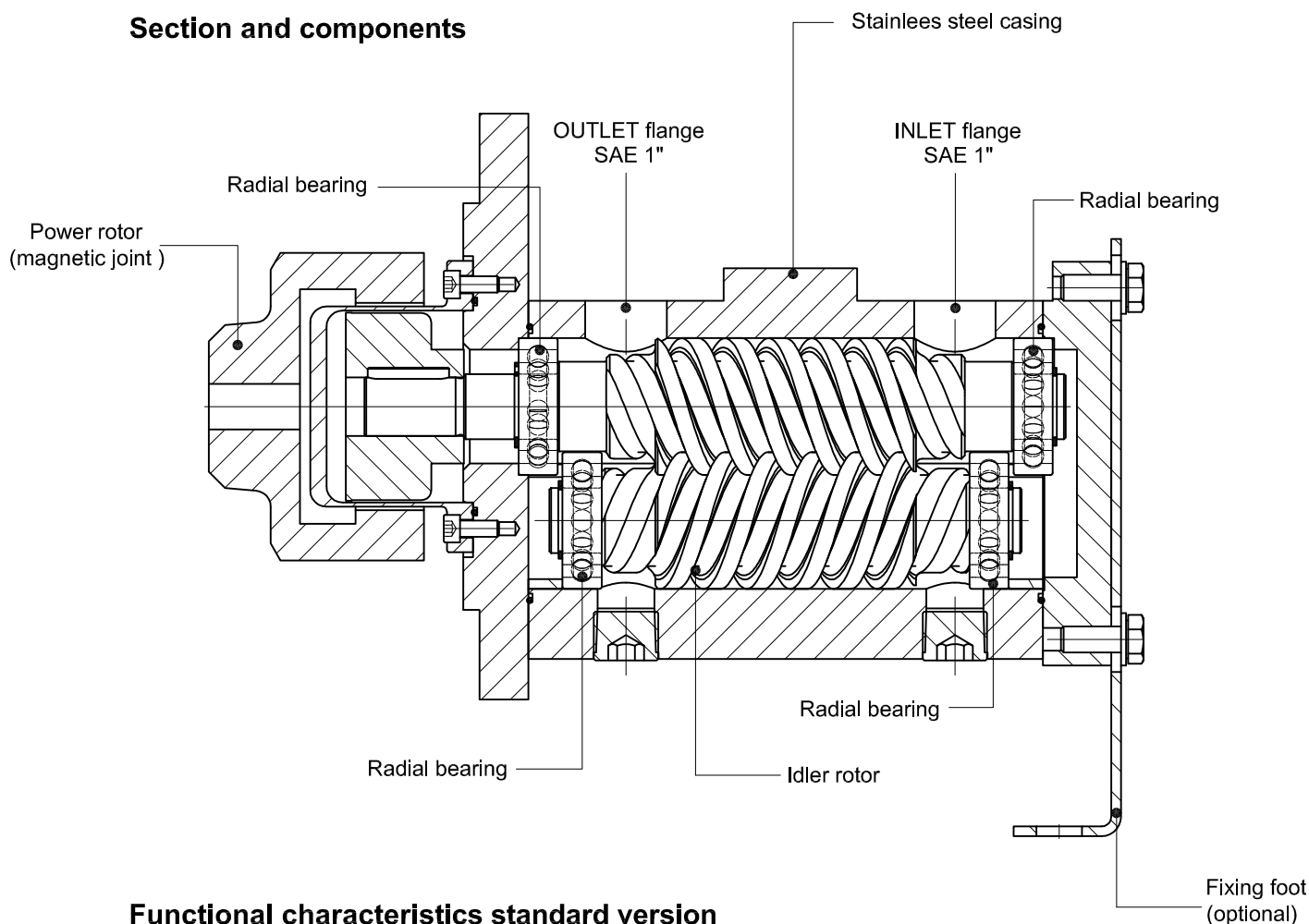


## Screw pumps - PXWTG 042-040



For hydraulic oils, lubricating oils and corrosive fluid also with dissolved gases.  
Admissible differential pressure (continuous) = 2 bar (up to 10 bar only with mineral oil).

### Section and components



### Functional characteristics standard version

|   |   |                                   |
|---|---|-----------------------------------|
| <b>Delivery flow</b>  | See appendix - table 2  |                                   |
| <b>Allowable differential pressure*</b>                       | max 2 bar (up to 10 bar only with mineral oil)  |                                   |
| <b>Allowable delivery pressure</b>                            | up to 40 bar (up to 507.6 psi)  |                                   |
| <b>Allowable suction pressure</b>                             | up to 35 bar (up to 507.6 psi)  | For different values contact SEIM |
| <b>Kinematics viscosity</b>                                   | from 1 to 10 cSt STD  | For different values contact SEIM |
| <b>Admissible temperature</b>                                 | up to 150 °C (up to 302 °F)   | For different values contact SEIM |
| <b>Driving speed</b>  | 1450 rpm  |                                   |
| <b>Average noise level</b>                                    | 60 - 65 dB(A) at 1450 rpm   |                                   |
| <b>Reccomended fluid cleanliness filtration in the system</b> | ISO 4406 - 21/19/16 ... NAS 1638 - NAS 10 ... ISO 16889 - B <sup>2</sup> <sub>1000</sub> =25 µm |                                   |
| <b>Direction of rotation</b>                                  | Clockwise, as seen from the driving side  |                                   |
| <b>Suction filtration</b>                                     | See appendix - table 1  |                                   |

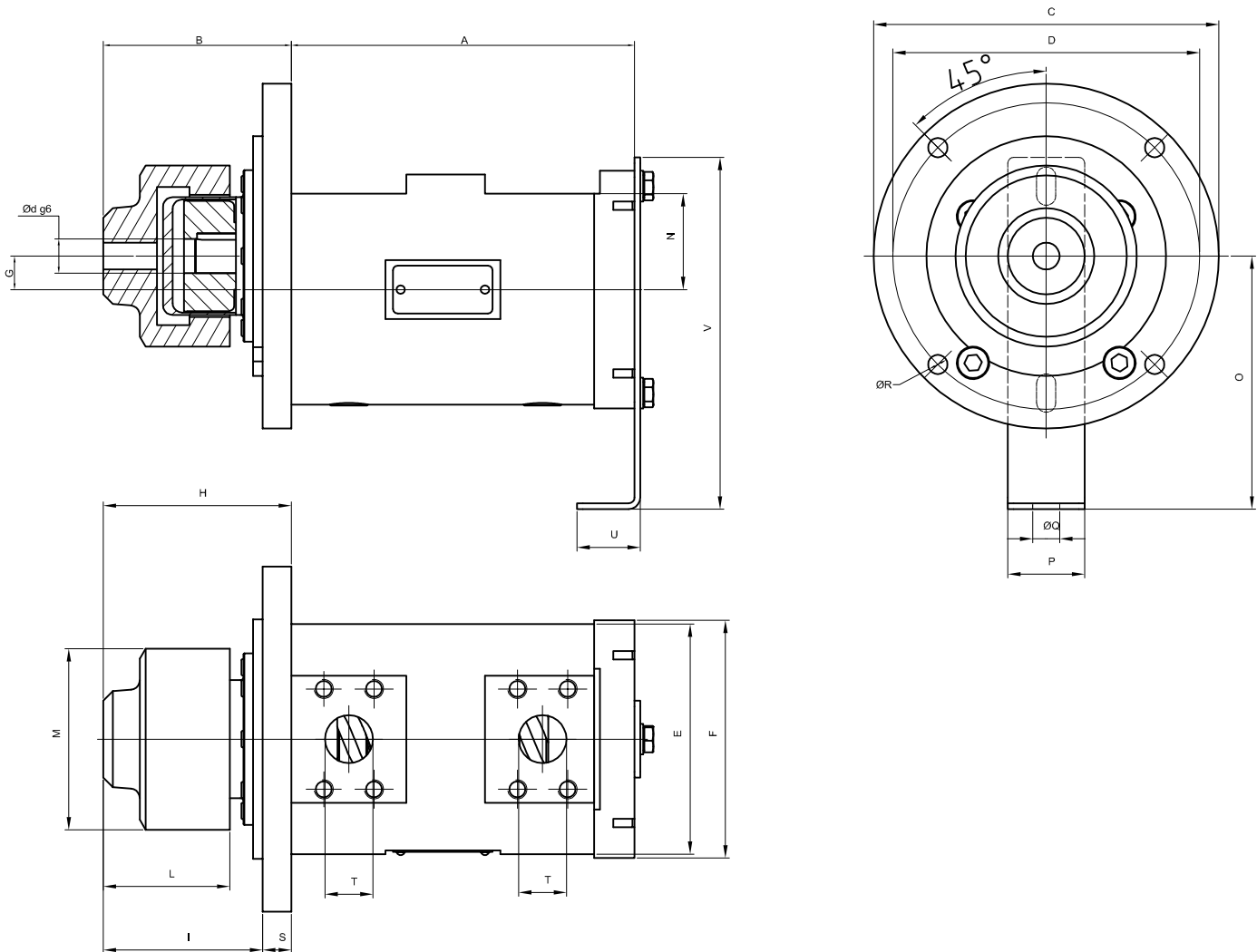
\* Reduced pressure limits apply due to fluid viscosity and driving speed  
Consult the performance charts for the individual pump size  
*For different functional characteristics and materials, please contact our sales department*

SEIM reserves the right to introduce dimensional changes or variation to the products of this technical data

# Screw pumps - PXWTG 042-040



For hydraulic oils, lubricating oils and corrosive oil also with dissolved gases.  
 Admissible differential pressure (continuous) = 2 bar (up to 10 bar only with mineral oil).



PXWTG 042 - 040 - ENG - 07-18

## Preliminary dimensional chart (mm)

| MODEL        | A   | B  | ØC  | ØD  | Ød | ØE  | ØF  | G  | H  | I  | L  | ØM | N  | O | P | ØQ | ØR | S  | T   | U | V |
|--------------|-----|----|-----|-----|----|-----|-----|----|----|----|----|----|----|---|---|----|----|----|-----|---|---|
|              |     |    |     |     |    |     |     |    |    |    |    |    |    |   |   |    |    |    | SAE |   |   |
| PXWTG042-040 | 179 | 98 | 180 | 160 | 18 | 120 | 124 | 18 | 98 | 83 | 66 | 95 | 50 | * | * | *  | 10 | 15 | 1"  | * | * |

\*Custom value based on fixing need

SEIM srl  
 Via A. Volta 17  
 20090 Cusago (MI) ITALY  
 Tel. (+39) 02.90.39.21.1  
 Fax. (+39) 02.90.39.21.41  
 e-mail: seim@seim.it

[www.seim.it](http://www.seim.it)

SEIM reserves the right to introduce dimensional changes or variation to the products of this technical data

## Screw pumps - PXWTG 042-040



For hydraulic oils, lubricating oils and corrosive oil also with dissolved gases.  
Admissible differential pressure (continuous) = 2 bar (up to 10 bar only with mineral oil).

### Appendix

Table 1

| VISCOSITY | MESH STRAINER     |
|-----------|-------------------|
| < 5 cSt   | 60 mesh           |
| < 10 cSt  | 40 mesh           |
| < 20 cSt  | 20 mesh           |
| < 200 cSt | Perforation 1/8"  |
| < 500 cSt | Perforation 3/16" |
| > 500 cSt | Perforation 1/4"  |

Table 2

| Viscosity (cSt) | Fluid Flow (l/min) | Operating Power (kW) | Drive speed (rpm) | Differential pressure (bar) |
|-----------------|--------------------|----------------------|-------------------|-----------------------------|
| 2               | 24                 | 0,21                 | 1450              | 2                           |
| 5               | 28                 | 0,25                 | 1450              | 2                           |
| 10              | 31                 | 0,3                  | 1450              | 2                           |

\* If pressure > 2 bar use temperature must be  $\leq 120$  °C