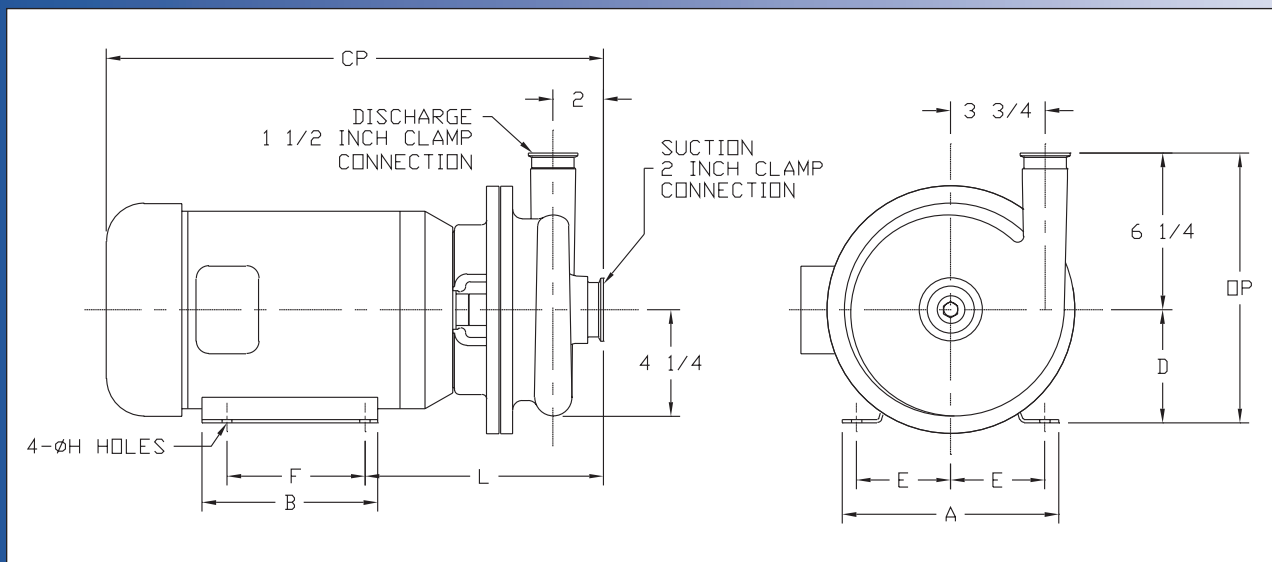
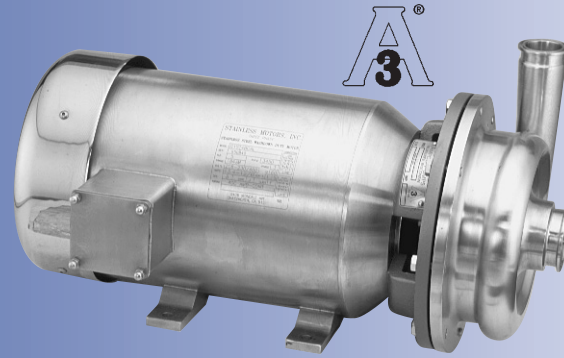


# Ampco Centrifugal Pumps

DATA SHEET

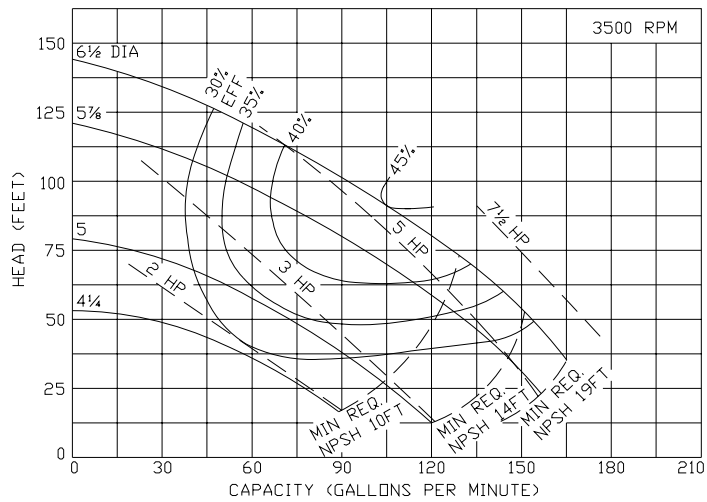
MODEL MC3 2 X 1 1/2



TEFC MOTOR			DIMENSIONS IN INCHES (For Reference Only)									APPROX. WEIGHT (LBS)
HP	RPM	FRAME	A (typ)	B (typ)	D	E	F	H	L	CP	OP	
1	1750	143JM	6-1/2	6	3-1/2	2-3/4	4	11/32	8-29/32	17-7/32	9-3/4	84
1-1/2	1750	145JM	6-1/2	6	3-1/2	2-3/4	5	11/32	8-29/32	17-7/32	9-3/4	88
2	3500	145JM	6-1/2	6	3-1/2	2-3/4	5	11/32	8-29/32	17-7/32	9-3/4	84
3	3500	145JM	6-1/2	6	3-1/2	2-3/4	5	11/32	8-29/32	17-7/32	9-3/4	92
5	3500	184JM	8-5/8	6-1/2	4-1/2	3-3/4	4-1/2	13/32	9-17/32	20-1/8	10-3/4	110
7-1/2	3500	184JM	8-5/8	6-1/2	4-1/2	3-3/4	5-1/2	13/32	9-17/32	21-5/8	10-3/4	129
10	3500	215JM	9-1/2	8	5-1/4	4-1/4	7	13/32	10-17/32	21-5/8	11-1/2	168

## MATERIAL SPECIFICATIONS

PART NAME	STAINLESS STEEL
Casing & Cover	316L Stainless
Impeller	316L Stainless
Motor Shaft	Steel
Shaft Sleeve	316L Stainless
Adapter	Cast Iron



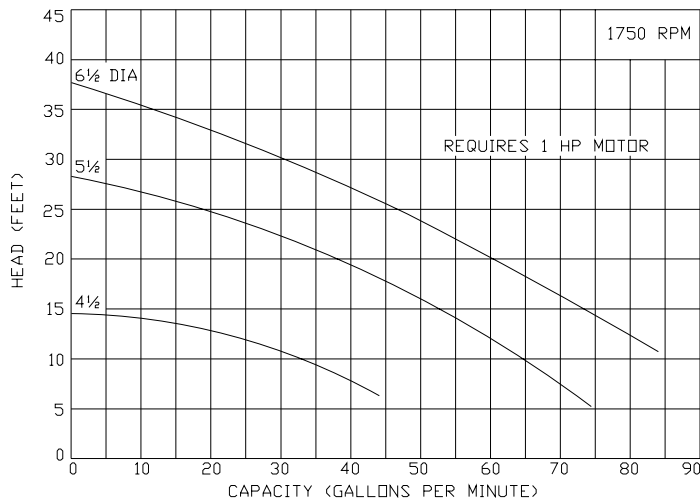
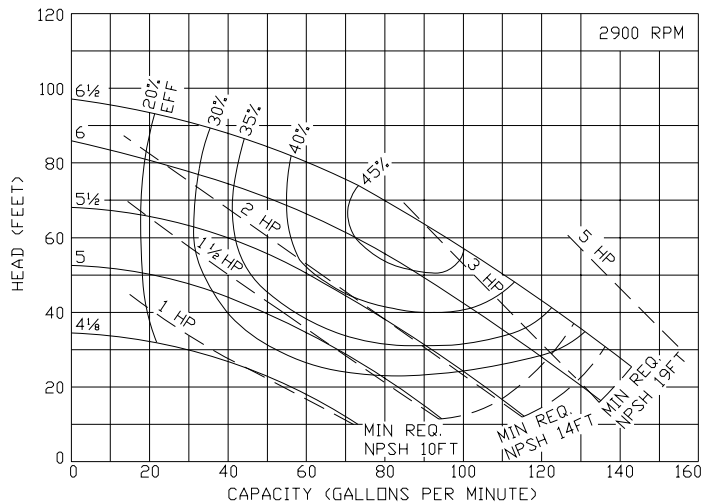
# Ampco Centrifugal Pumps

## MODEL MC3 2 X 1 1/2

Curves show approximate characteristics based on clear 68° water. Rated point is guaranteed.

MC3/MCH3 pumps are in conformance with 3A sanitary standards for centrifugal pumps for milk and milk products, Number 02-09.

Standard M Series pumps have a 32RA (150 grit) finish, on all product contact surfaces.



# Ampco Pumps Company

4424 West Mitchell Street  
 Milwaukee, Wisconsin 53214  
 PHONE (414) 643-1852  
 FAX (414) 643-4452