

Techna SHAFT / SPOOL RETAINING COLLARS

QUIKLOC - Shaft Collar for Smooth Shafts / Tubes

QuikLoc Shaft Collars give you instant reel or spool changeovers for almost every application.

Advantages

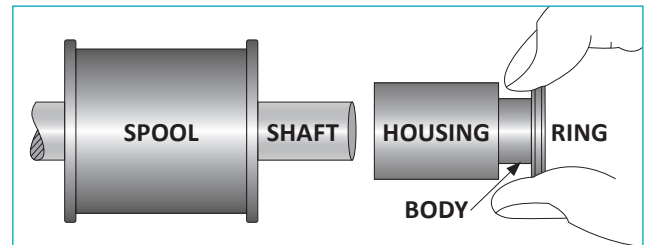
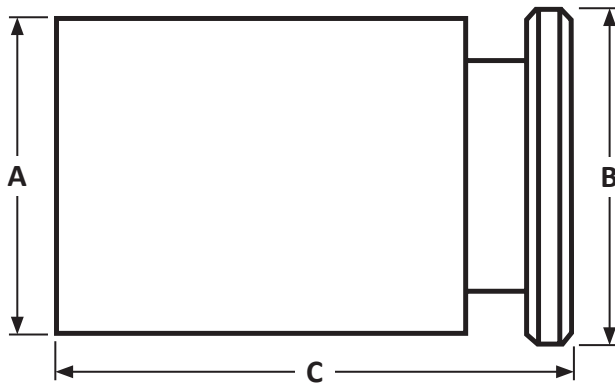
- Cuts changeover times up to 80%
- Holds reels and spools firmly in place
- Rugged, all-steel construction for long life
- Eliminates scored or chewed up shafts
- No tools to drop or lose
- Metric sizes fit shafts from 6mm to 76mm diameter
- Imperial sizes fit shafts from 1/4" to 3" diameter

Applications Include

- Wire & Cable
- Tap & Strip
- Ribbon & Braid
- Fabric & Paper
- Hose & Tubing
- Anything that is wound on or stripped from spools or reels



Dimensions



To Quickly Lock On Shaft:

Firmly grasp the ring section of the QuikLoc collar with your thumb and fingers. Draw it out of the housing. Slide the QuikLoc collar down the shaft and into position against the spool or reel, then release your thumb and fingers to lock in place.

To Quickly Slide Off Shaft:

Grasp the ring section with your thumb and fingers. Firmly draw the QuikLoc unit away from the spool or reel in one smooth motion. The collar will easily release and slide off the shaft quickly and safely.

Available QuikLoc models - Metric

Metric Models*	Dimensions			
Order Ref.	Description (mm)	A (in)	B (in)	C (in)
QL-6mm	6mm Shaft Collar	0.875	0.937	1.750
QL-7mm	7mm Shaft Collar	0.875	0.937	1.750
QL-8mm	8mm Shaft Collar	0.875	0.937	1.750
QL-9mm	9mm Shaft Collar	0.875	0.937	1.750
QL-10mm	10mm Shaft Collar	0.875	0.937	1.750
QL-11mm	11mm Shaft Collar	1.000	1.125	1.750
QL-12mm	12mm Shaft Collar	1.000	1.125	1.750
QL-13mm	13mm Shaft Collar	1.125	1.375	1.750
QL-14mm	14mm Shaft Collar	1.125	1.375	1.750
QL-15mm	15mm Shaft Collar	1.125	1.375	1.750
QL-16mm	16mm Shaft Collar	1.125	1.375	1.750

* Metric models are bored for metric shafts but use the same shell casing as the imperial parts.

Techna SHAFT / SPOOL RETAINING COLLARS

Available QuikLoc models - Metric (Continued)

Metric Models*		Dimensions		
Order Ref.	Description (mm)	A (in)	B (in)	C (in)
QL-17mm	17mm Shaft Collar	1.250	1.375	1.750
QL-18mm	18mm Shaft Collar	1.250	1.375	1.750
QL-19mm	19mm Shaft Collar	1.250	1.375	1.750
QL-20mm	20mm Shaft Collar	1.500	1.625	1.750
QL-22mm	22mm Shaft Collar	1.500	1.625	1.750
QL-24mm	24mm Shaft Collar	1.500	1.625	1.750
QL-25mm	25mm Shaft Collar	1.500	1.625	1.750
QL-26mm	26mm Shaft Collar	1.500	1.625	1.750
QL-27mm	27mm Shaft Collar	2.000	2.125	1.750
QL-28mm	28mm Shaft Collar	2.000	2.125	1.750
QL-29mm	29mm Shaft Collar	2.000	2.125	1.750
QL-30mm	30mm Shaft Collar	2.000	2.125	1.750
QL-32mm	32mm Shaft Collar	2.250	2.250	1.875
QL-33mm	33mm Shaft Collar	2.250	2.250	1.875
QL-35mm	35mm Shaft Collar	2.250	2.250	1.875
QL-36mm	36mm Shaft Collar	2.250	2.250	1.875
QL-37mm	37mm Shaft Collar	2.250	2.250	1.875
QL-38mm	38mm Shaft Collar	2.250	2.250	1.875
QL-38.5mm	38.5mm Shaft Collar	2.355	2.375	1.875
QL-39mm	39mm Shaft Collar	2.355	2.375	1.875
QL-40mm	40mm Shaft Collar	2.355	2.375	1.875
QL-45mm	45mm Shaft Collar	2.725	2.725	1.875
QL-50mm	50mm Shaft Collar	2.725	2.725	1.875
QL-54mm	54mm Shaft Collar	2.950	2.950	1.875
QL-55mm	55mm Shaft Collar	2.950	2.950	1.875
QL-56mm	56mm Shaft Collar	2.950	2.950	1.875
QL-70mm	70mm Shaft Collar	3.600	3.600	1.875
QL-73mm	73mm Shaft Collar	3.600	3.600	1.875
QL-76mm	76mm Shaft Collar	3.600	3.600	1.875

* Metric models are bored for metric shafts but use the same shell casing as the imperial parts.

Available QuikLoc models - Imperial

Imperial Models		Dimensions (in)		
Order Ref.	Description	A	B	C
QL00-1/4	1/4" Shaft Collar	0.875	0.937	1.750
QL00-5/16	5/16" Shaft Collar	0.875	0.937	1.750
QL00-3/8	3/8" Shaft Collar	0.875	0.937	1.750
QL00-7/16	7/16" Shaft Collar	1.000	1.125	1.750
QL00-1/2	1/2" Shaft Collar	1.000	1.125	1.750
QL00-9/16	9/16" Shaft Collar	1.125	1.375	1.750
QL00-5/8	5/8" Shaft Collar	1.125	1.375	1.750

Techna SHAFT / SPOOL RETAINING COLLARS

Available QuikLoc models - Imperial (Continued)

Imperial Models		Dimensions (in)		
Order Ref.	Description	A	B	C
QL00-11/16	11/16" Shaft Collar	1.125	1.375	1.750
QL00-3/4	3/4" Shaft Collar	1.250	1.375	1.750
QL00-13/16	13/16" Shaft Collar	1.500	1.625	1.750
QL00-7/8	7/8" Shaft Collar	1.375	1.625	1.750
QL00-15/16	15/16" Shaft Collar	1.500	1.625	1.750
QL01	1" Shaft Collar	1.500	1.625	1.750
QL01-1/16	1 1/16" Shaft Collar	2.000	2.125	1.750
QL01-1/8	1 1/8" Shaft Collar	2.000	2.125	1.750
QL01-3/16	1 3/16" Shaft Collar	2.000	2.125	1.750
QL01-1/4	1 1/4" Shaft Collar	2.000	2.125	1.750
QL01-1/4HD	1 1/4" Shaft Collar HD	2.250	2.250	1.875
QL01-5/16	1 5/16" Shaft Collar	2.250	2.250	1.875
QL01-3/8	1 3/8" Shaft Collar	2.250	2.250	1.875
QL01-7/16	1 7/16" Shaft Collar	2.250	2.250	1.875
QL01-1/2	1 1/2" Shaft Collar	2.250	2.250	1.875
QL01-17/32	1 17/32" Shaft Collar	2.355	2.355	1.875
QL01-9/16	1 9/16" Shaft Collar	2.355	2.355	1.875
QL01-5/8	1 5/8" Shaft Collar	2.355	2.355	1.875
QL01-11/16	1 11/16" Shaft Collar	2.355	2.355	1.875
QL01-3/4	1 3/4" Shaft Collar	2.275	2.275	1.875
QL01-13/16	1 13/16" Shaft Collar	2.725	2.725	1.875
QL01-7/8	1 7/8" Shaft Collar	2.725	2.275	1.875
QL01-15/16	1 15/16" Shaft Collar	2.275	2.725	1.875
QL02	2" Shaft Collar	2.950	2.950	1.875
QL02-1/16	2 1/16" Shaft Collar	2.950	2.950	1.875
QL02-1/8	2 1/8" Shaft Collar	2.950	2.950	1.875
QL02-3/16	2 3/16" Shaft Collar	2.950	2.950	1.875
QL02-1/4	2 1/4" Shaft Collar	3.205	3.220	1.875
QL02-3/8	2 3/8" Shaft Collar	3.600	3.600	1.875
QL02-1/2	2 1/2" Shaft Collar	3.600	3.600	1.875
QL02-5/8	2 5/8" Shaft Collar	3.600	3.600	1.875
QL02-11/16	2 11/16" Shaft Collar	3.600	3.600	1.875
QL02-3/4	2 3/4" Shaft Collar	3.600	3.600	1.875
QL02-7/8	2 7/8" Shaft Collar	3.600	3.600	1.875
QL02-15/16	2 15/16" Shaft Collar	3.600	3.600	1.875
QL03	3" Shaft Collar	3.600	3.600	1.875