

**DESCRIPTION**

Normally Closed (NC) - Pneumatic Shuttle Valve

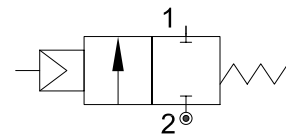
**PRESENTATION**

- Coaxial valve optimized to ensure high flow control
- The design allows high pressure management
- On request available Normally open or double acting version
- Universal mount position
- Optional EPDM sealing version for steam and hot water application



**USE:** Drinks Filling Machinery, Textile printing & Dyeing, Gas industry, Pharmacy & Medical Equipment, Chemical industry, Disinfection, Frothing Equipment, Water management

**CONNECTION:** Threaded NPT or GAS



**5**

**VALVE FEATURES**

Fluid Pressure	Up to max 232psi (16bar)
Control Pressure	43.5 - 116psi (3 - 8bar)
Control Fluid	Neutral gas, Air
Body material	AISI 304
Seal	FKM
Fluid	Water, oils and neutral fluids
Fluid temperature	-4°F to +300°F (-20°C to +150°C)
Ambient temperature	-4°F to +176°F (-20°C to +80°C)
Control Type	Normally closed

**OVERALL DIMENSION**

CODE	Threaded connection	Nominal Diameter		Pilot pressure		Max pressure		A	D	SW	B	L	Weight
		GAS or NPT	inches	mm	psi	bar	psi	bar	inches	inches	inches	inches	inches
CP100C...V10	3/8"	0.39	10	45-120	3-8	232	16	2,20	1,81	0,87	1,30	3,86	0.80
CP100D...V15	1/2"	0.59	15	45-120	3-8	232	16	2,40	2,05	1,04	1,38	4,41	1.00
CP100E...V20	3/4"	0.79	20	45-120	3-8	232	16	2,83	2,52	1,26	1,57	5,31	1.50
CP100F...V25	1"	1	25	45-120	3-8	232	16	3,07	2,72	1,61	1,69	5,63	1.92
CP100G...V32	1 1/4"	1.26	32	45-120	3-8	232	16	3,70	3,39	1,97	2,01	6,50	3.06
CP100H...V40	1 1/2"	1.57	40	45-120	3-8	232	16	4,09	3,78	2,20	2,20	7,09	3.76
CP100I...V50	2"	2	50	45-120	3-8	232	16	4,57	4,25	2,76	2,44	8,15	5.71

① G= GAS (ISO228)  
N= NPT (ANSI/ASME B1.20.1)

Ordination example: PEE332CNW10 connection 3/8" NPT  
PEE332CGW10 connection 3/8" GAS

