

**KOGANEI**

Air Treatment

---

**DESKTOP COMPRESSOR**

**INSTRUCTION MANUAL** Ver.1.0

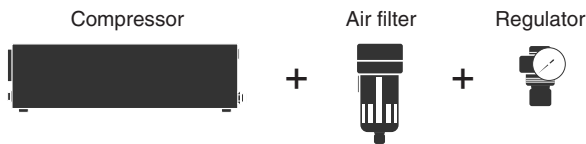
# Handling Instructions and Precautions

## Installation

1. Install the product in a horizontal, flat, firmly supported location, and ensure that it does not rattle during operation.
2. Allow plenty of room for the installation.
3. Avoid use in locations where the body may be subject to dripping water or oil, or to dust.
4. Position so that the side of the compressor with ventilator holes is at least 40 mm [1.57 in.] from any wall, and take care to avoid letting the ventilator holes become blocked. Failure to ensure adequate ventilation space will lead to a reduction in air circulation, causing internal temperatures to rise and a drastic deterioration in operating life.

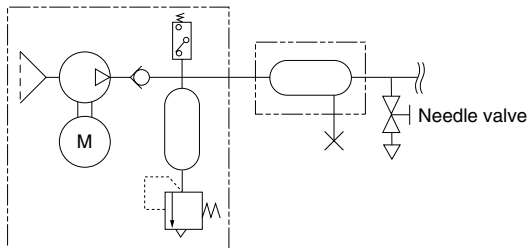


5. Avoid use in locations where sulfuric acid, hydrochloric acid, or other corrosive gases or ozone are present.
6. Avoid use in locations subject to strong vibrations or shocks.
7. The compressor does not incorporate any internal filter or other filtration device. Mount an air filter and regulator for use.



8. Always be sure to equip a residual pressure exhaust mechanism on the compressor's OUT side.

### Example



## Wiring

1. For a power supply when not using the optional AC adaptor, connect DC24V 2 A (instantaneous current 5 A or more) to a power input jack ( $\phi$  2.5 mm [0.098 in.] DC jack center plus, any product compatible with the old EIAJ standard RC-6705).
2. When using the AC adaptor, connect the input plug to the power input jack, and then connect the plug to the AC100V power supply.
3. When connecting the power cord, always plug the jack and plug all the way in.  
Loose connections can be the cause of electric shock or leak.
4. If the current flowing through the AC adaptor (AD-DPA) exceeds 3.3 A, an overcurrent protection circuit will cut off the circuit. If the unit fails to activate even when the power switch has been turned on, check the AC adaptor's primary outlet. If it still fails to activate when the switch is turned on, inspection and repair is required. Consult us.
5. If not using the optional AC adaptor, place a 3 A overcurrent protection circuit in the power circuit.

## Piping

1. The piping port of the compressor and air tank is a quick fitting for a tube with an outer diameter of 6 mm [0.236 in.].
2. Either a nylon tube or urethane tube can be used. For the tube outer diameter precision, use a nylon tube with nominal dimension of  $\pm 0.1$  mm [ $\pm 0.004$  in.], and a urethane tube with nominal dimension of  $\pm 0.15$  mm [ $\pm 0.0059$  in.], while the degree of ellipticity (difference between long diameter and short diameter) should be 0.2 mm [0.008 in.] or less.

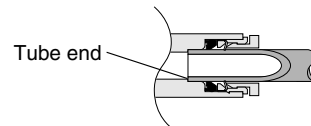
- Cautions:**
1. Use tubes without scratches on the outer surface. If scratches appear due to repeated use, cut off that portion.
  2. Do not excessively bend or twist the tube near the fitting. It could be the cause of air leaks.

### 3. Connecting and disconnecting tube

- Caution:** Before connecting or disconnecting tubes, always turn off the power switch, and use the residual pressure exhaust mechanism to vent the air.

#### Precautions for connecting the tube

- (1) Check that the tube cut surface is perpendicular to the tube length, that there is no scratch on the outside of the tube, and that the tube shape has not become elliptical.
- (2) When connecting tubes, failure to push the tube in all the way to the fitting end could result in leaks.



- (3) After connection, check that the tube cannot be pulled out.

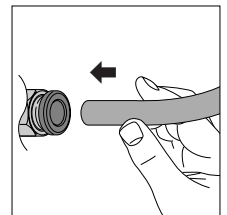
#### Precautions for disconnecting the tube

- (1) When releasing a tube, always check that pressure inside the compressor is at zero.
- (2) Push the release ring evenly all the way to the end, and then pull the tube straight out. An insufficient push could prevent the tube from being pulled out, or leave scratched or scarred tube fragments remaining behind inside the fitting.

#### Tube connection and disconnection method

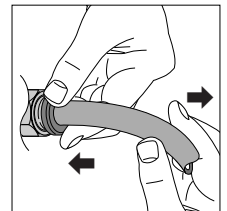
##### 1) Connecting the tube

The operator merely needs to push the tube all the way to the end of the quick fitting, after which a lock claw secures it in place, and an elastic sleeve seals the circumference around the tube.

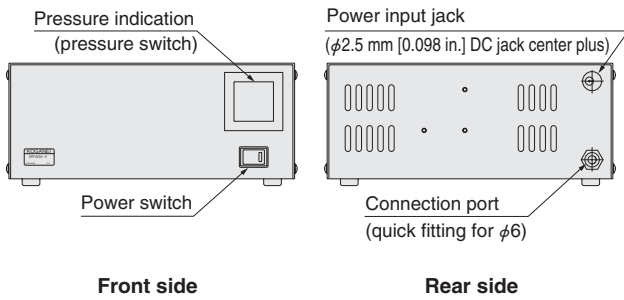


##### 2) Disconnecting the tube

When removing the tube, push the release ring to open the lock claw, and then pull out the tube. Always shut off the air before removal.



## Operation



1. Before operation, check that piping and wiring have been properly connected.
2. When the power switch is turned on, the switch lamp lights up and the pressure display value rises. When the pressure inside the compressor reaches 0.55 MPa [80 psi.], it automatically shuts off (unloads). When compressed air is consumed and pressure inside the compressor drops to 0.50 MPa [73 psi.], it automatically restarts (loads).

**Caution:** If the compressed air consumption exceeds the compressor capacity, the compressor will operate continuously.

3. Turning off the power switch shuts down the equipment operation.

**Caution:** Take notice that even after compressor operation shuts down, residual pressure remains inside the tank and piping, etc.

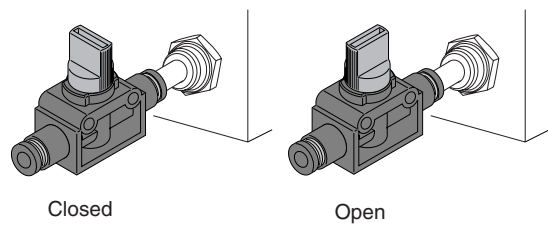
4. If a large amount of compressed air is needed for short intervals, installing an air tank **DPT** can be effective.
5. Do not change the pressure switch settings. It could shorten the equipment operating life.
6. The compressor drains collected liquid (moisture). This is not a problem. Make sure to attach an air filter on the secondary side and periodically drain the collected liquid.

## Collected liquid draining

On the air tank, remove the drain port plug to drain out the collected liquid. Before removing the drain plug, always release the pressure inside the tank, and check that the pressure is at normal atmospheric pressure. After the collected liquid has been drained, always restore the drain plug to its original position.

### -V: drain port with hand valve

For the air tank with a hand valve, the collected liquid can be drained out merely by rotating the flow selector. When the tank is in use, always use in the closed state, as shown in the figure below. To drain out the collected liquid, first release the pressure inside the tank, check that the pressure is at normal atmospheric pressure, and then open the hand valve. To open the valve, rotate the top knob clockwise 90°. When the collected liquid is drained, return the knob to the original closed position.

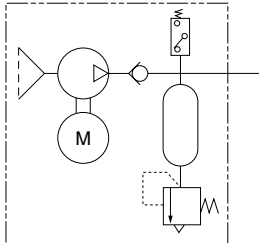


# DESKTOP TYPE

## Compressors



### Pneumatic Circuit Diagram



### Specifications

#### Compressor

Item	Model	DPP-AY□□	DPP-AT□□
		Horizontal	Vertical
Input voltage		DC24V (Switching power supply use possible)	
Rated current		2 A (Instantaneous current 5 A or more)	
Input plug		Compatible with $\phi$ 2.5 mm [0.098 in.] DC jack (Center plus)	
Discharge flow rate		2.0 $\ell$ /min [0.0706 ft <sup>3</sup> /min.] (at 0.5 MPa [73 psi.])	
Ambient temperature range		0 to 40°C [32 to 104°F] (No freezing or condensation)	
Maximum pressure		0.55 MPa [80 psi.]	
Control pressure	OFF/ON	0.55/0.50 MPa [80/73 psi.] (Unload/Load)	
Built-in tank capacity		900 m $\ell$ [54.91 in. <sup>3</sup> ]	
Noise		55 dB	
Connection port		Quick fitting for tube with outer diameter $\phi$ 6 mm [0.236 in.] <sup>Note</sup>	
Mass		4.6 kg [10.1 lb]	

Note: For the tubes used, see p.189 on piping and wiring.

### Optional Specifications

#### AC Adaptor

Items	Model	AD (AD-DPA)
Input voltage		AC100~240V
Output voltage		DC24V
Rated current		2.5 A
Mass		0.32 kg [0.71 lb.]

# Order Codes

**DPP** -  -  -

Desktop type compressor

**Device input power supply**  
**D4** : No AC adaptor  
**AD** : With AC adaptor

**Assembled option**  
**Blank** : None  
**P** : With block-off plug for outlet port



**Installation direction**  
**AY** : Horizontal



**AT** : Vertical

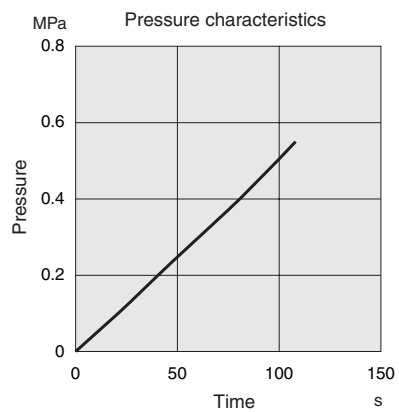
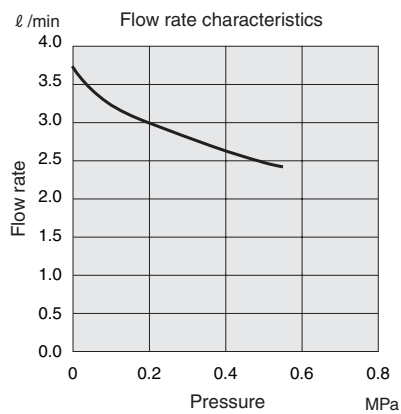


**Additional Part**  
**AC adaptor**  
 Model : **AD-DPA**



For the order codes for air tanks with the right fit for the desktop type compressor, see p.194.

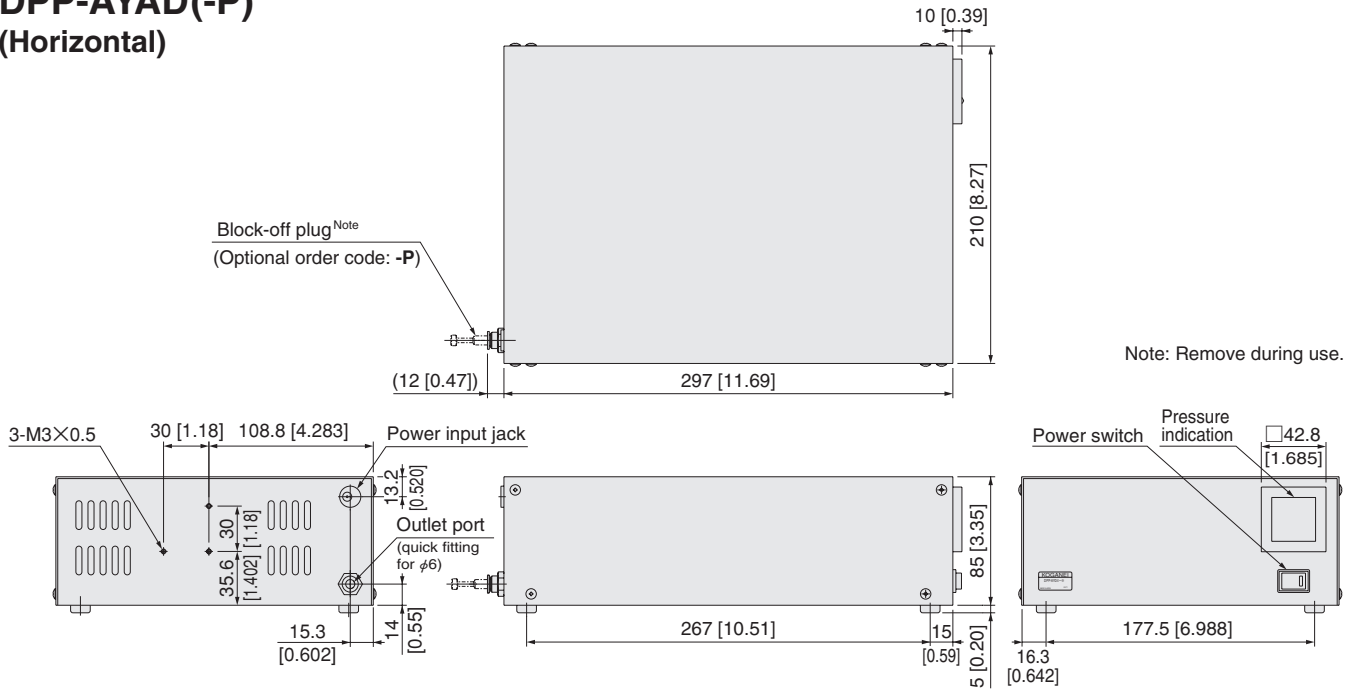
# Performance Graph



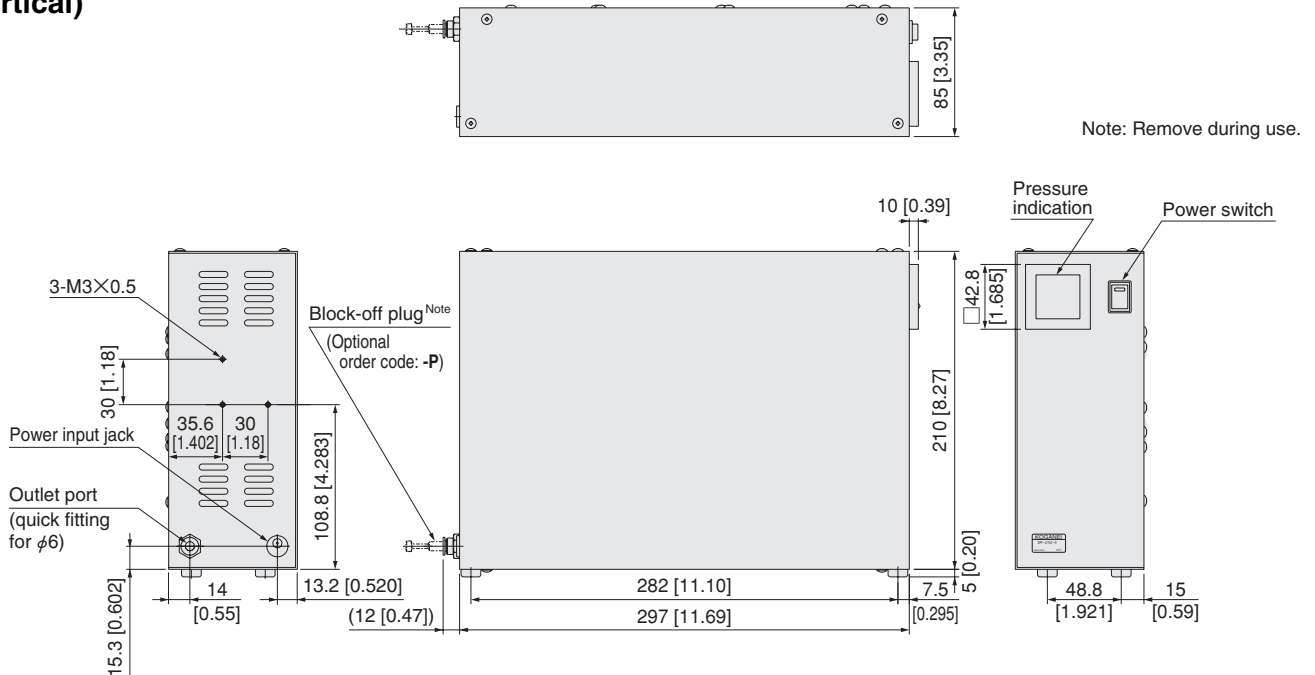
1 l /min = 0.0353 ft.<sup>3</sup>/min.  
 1 MPa = 145 psi.

1 MPa = 145 psi.

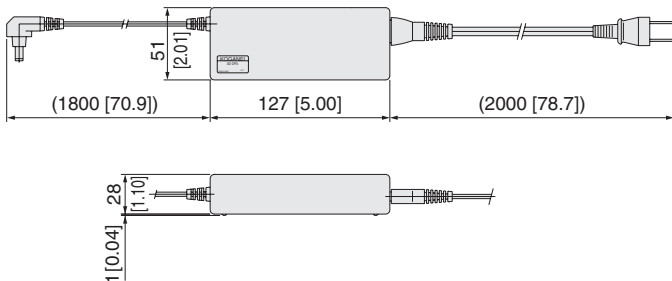
**DPP-AYD4(-P)**  
**DPP-AYAD(-P)**  
 (Horizontal)



**DPP-ATD4(-P)**  
**DPP-ATAD(-P)**  
 (Vertical)

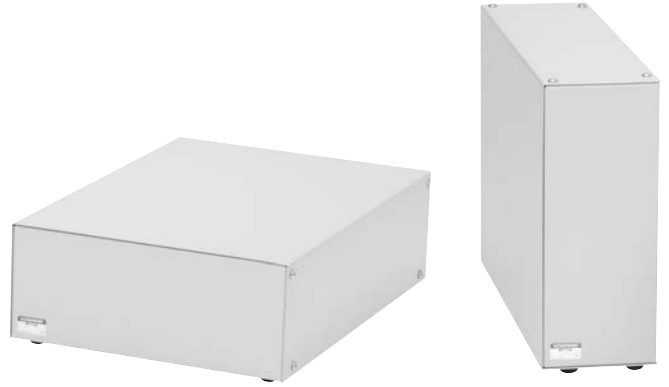


**Option**  
**AD (AC adaptor AD-DPA)**

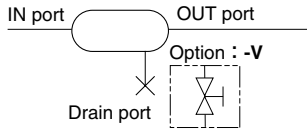


# DESKTOP TYPE

## Air Tanks



### Pneumatic Circuit Diagram



### Specifications

#### Air tank

Item	Model	DPT-Y18	DPT-T18
Installation direction		Horizontal	Vertical
Media		Air	
Maximum operating pressure		0.8 MPa [116 psi.]	
Ambient temperature range		0 to 40°C [32 to 104°F] (No freezing)	
Built-in tank capacity		1800 mℓ [109.82 in. <sup>3</sup> ]	
Connection port		Quick fitting for tube with outer diameter $\phi$ 6 mm [0.236 in.] <sup>Note</sup>	
Mass		3.2 kg [7.1 lb.]	

Note: For the tubes used, see p.189 on piping and wiring.

### Order Codes

**DPT** - [ ] **18** - [ ] - [ ]

**Desktop type air tank**

**Tank capacity**  
**18** : 1800 mℓ  
 [109.82 in.<sup>3</sup>]

**Installation direction**  
**Y** : Horizontal

**Drain port**  
**P** : With block-off plug

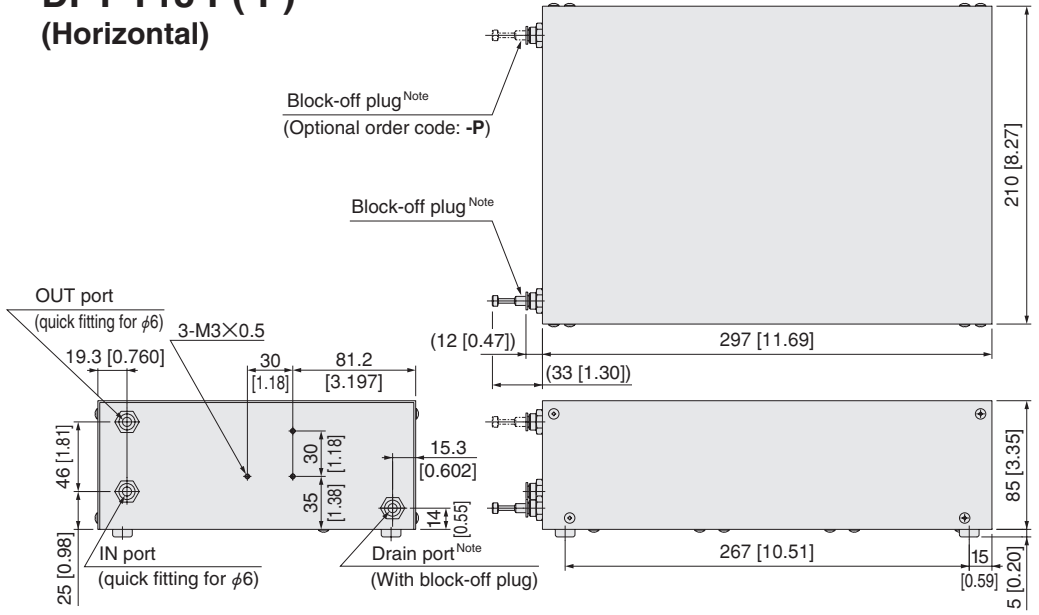
**Assembled option**  
**Blank** : None  
**P** : With block-off plug

**T** : Vertical

**V** : With hand valve

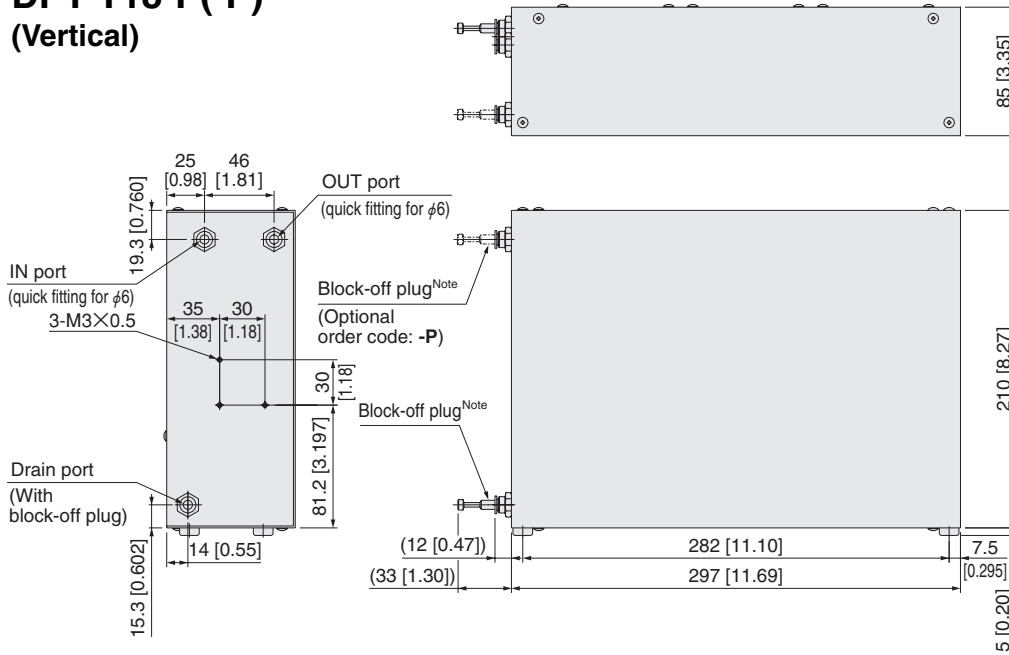
**Dimensions of Air Tank mm [in.]**

**DPT-Y18-P(-P)**  
**(Horizontal)**



Note: During use, remove the block-off plug on the OUT port. Other than for draining collected liquid, never remove the block-off plug on the drain port.

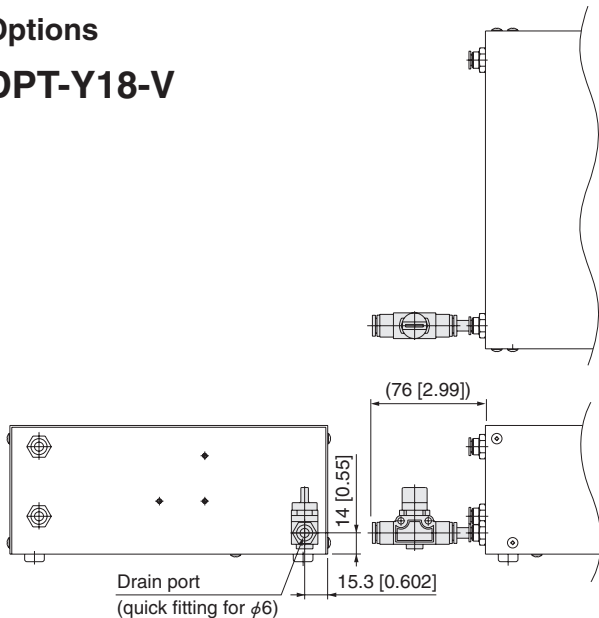
**DPT-T18-P(-P)**  
**(Vertical)**



Note: During use, remove the block-off plug on the OUT port. Other than for draining collected liquid, never remove the block-off plug on the drain port.

**Options**

**DPT-Y18-V**



**DPT-T18-V**

