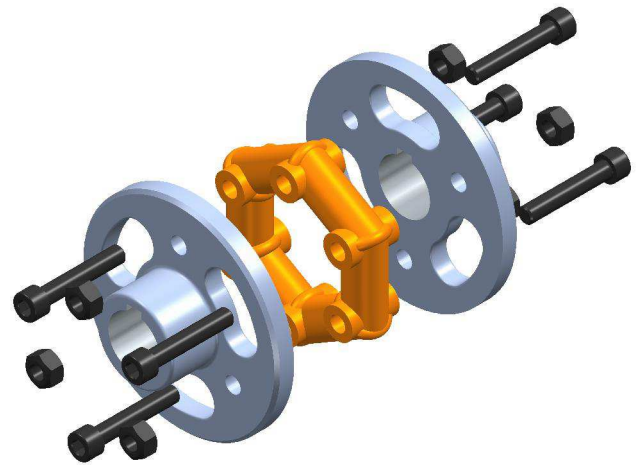
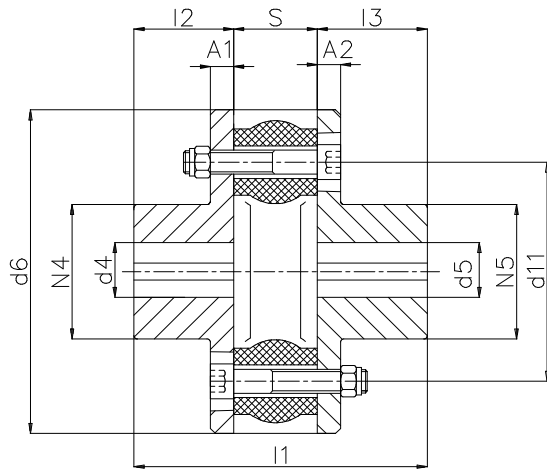


## Afmetingen

## Abmessungen

## Dimensions



### SUPERFLEX

afmeting Größe Size	nom. moment	max toerental	min/max boring								massa	massatraagheidsmoment	dynamische torsiestijfheid
	$T_{KN}$	$n_{max}$	$d_4 / d_5$	$d_6$	$d_{11}$	$N_4 = N_5$	$L_1$	$L_2 = L_3$	$S$	$A_1 = A_2$	$M^{(1)}$	$J^{(1)}$	$C_{dyn}$
	Nennmoment nom. torque (Nm)	max Drehzahl max speed (min <sup>-1</sup> )	min/max Bohrung min/max Bore	(mm)							Masse mass (kg)	Massenträgheitsmoment mass moment of inertia (kg.m <sup>2</sup> )	dynamische Drehsteifigkeit dynamic torsional stiffness (Nm/rad)
<b>4</b>	40	9.000	0 - 28	106	65	40,0	101	36,5	28	11,5	1,9	0,0020	285
<b>8</b>	80	7.500	0 - 35	134	85	52,0	116	42,0	32	11,5	3,1	0,0052	570
<b>16</b>	160	6.500	0 - 42	151	100	64,0	148	51,0	46	13,5	4,8	0,0096	1.140
<b>27</b>	270	5.000	0 - 60	191	132	89,5	157	53,5	50	14,0	9,1	0,0295	2.120
<b>55</b>	550	4.000	0 - 75	240	170	110,0	208	73,0	62	20,0	18,8	0,0970	4.300
<b>80</b>	800	3.500	0 - 85	260	183	126,0	259	95,5	68	27,0	30,0	0,1829	6.830
<b>120</b>	1.200	3.000	40 - 95	290	210	145,0	300	111,0	78	28,0	42,6	0,3175	14.400
<b>240</b>	2.400	2.000	40 - 130	390	280	200,0	380	140,0	100	32,0	100,6	1,3030	53.100

(1) - gelden voor gemiddelde boringen / gelten für mittlere Bohrungen / refer to medium sized bores

### Aanhaalmoment Bouten

### Anzugsmoment Schrauben

### Tightening Torque Bolts

Afmeting / Größe / Size	4	8	16	27	55	80	120	240
bouten Schrauben - DIN 912 (8.8) bolts	6 x M8 x 50	6 x M10 x 55	6 x M12 x 75	6 x M14 x 80	6 x M20 x 110	6 x M20 x 120	8 x M20 x 130	8 x M27 x 160
aanhaalmoment - bouten Anzugsmoment - Schrauben tightening torque - bolts	(Nm) 22	40	70	100	340	340	340	1.000