

Datasheet

Unipolar Pulse Generators SD 30, SD 150 and SD 300



SD 150 rear view



SD 300 rear view

In combination with an ADL DC power supply, the pulse generators generate unipolar pulses. The pulse generators work with a fixed frequency of 20 kHz. Thus, with an external signal generator this frequency can be varied from 1 kHz up to 40 kHz. The pulse generators are equipped with automatic arc suppression. The parameters for trip-level and break-time are automatically adjusted to the specific processes. Programming by the user is not necessary at all.

For automatic synchronization, several generators can be connected via control cables. In this case the pulse generators automatically switch to external synchronization.

★ Highlights

- ★ Output power 3 kW, 15 kW, 30 kW
- ★ Parallel operation up to 240 kW
- ★ Automatic Arc handling
- ★ Air cooling
- ★ Compact design, 1/2 19" - 3 HU
- ★ Floating output

We are happy to help!

ADL Analoge & Digitale Leistungselektronik GmbH
Bunsenstraße 30 · D-64293 Darmstadt
www.adl-gmbh.com

Customer Support

Tel. +49 (0) 6151 86072-41 or -42
Fax +49 (0) 6151 86072-75
E-Mail: sales@adl-gmbh.com

Datasheet

Variants

Type	Pulse Output			Order-No.
SD 30	20 kHz	800 V	3 kW	11Z010
SD 150	20 kHz	800 V	15 kW	11Z015
SD 300	20 kHz	800 V	30 kW	11Z035

Options and Accessories - detailed Information see Datasheet "Accessories"

Type	Order-No.
Indications	
Status LEDs (default)	-
Connectors	
SD 30 / SD 150 Connector Set X1/X6 Harting straight	03Y050
SD 30 / SD 150 Connector Set X1/X6 Harting angled	03Y070
SD 300 Connector Set X1/X6 Harting straight	03Y060
SD 300 Connector Set X1/X6 Harting angled	03Y080
Master Oszillator OM 20	50Y301

Datasheet

Technical Data

	SD 30	SD 150	SD 300
Operational Data			
Input Voltage	Maximum 800 V DC		
Output Current	5.3 A	38 A	70 A
Output Power	3 kW (DC-Output of power supply)	15 kW (DC-Output of power supply)	30 kW (DC-Output of power supply)
Pulse Frequency	20 kHz, fixed		
Pulse Time	48 μ s		
Break Time	2 μ s		
Principle of Operation	Unipolar		
Arc Suppression	Automatic parameter setting		
Arc Quenching Time	< 2 μ s		
Arc Energy	< 0.3 mJ / kW		
Indications	Status LEDs		
DC Input / Pulse Output			
Input Cable JZ-600-Y-CY	2 x 1.5 mm ²	2 x 6 mm ²	2 x 16 mm ²
Output Cable JZ-600-Y-CY	2 x 1.5 mm ²	2 x 6 mm ²	2 x 16 mm ²
Maximum Cable Length	5 m (between pulse generator and cathode)		
Output Inductance	Max. 10 μ H (Cable + Cathode)		
Auxiliary Voltage	24 V DC +/- 10 %, 1 A		24 V DC +/- 10 %, 1.2 A
Cooling system			
Air Cooling	Built-in fan, maximum ambient temperature 40° C		
Mechanical Data			
Size (without Plug)	Width: 167 mm, Height: 127 mm (3 HU), Length 474 mm		Width: 218 mm (½ 19"), Height: 130 mm (3 HU), Length 645 mm
Weight (without Packaging)	10 kg		18 kg
Compatible with the following Power Supplies:	GS 10 – GS 30 (Except all versions over 800 V)	GS 60 – GS 150 GX 50 – GX 150 (Except all versions over 800 V or over 38 A)	GSW 100 – GSW 300 HX 150 – HX 300 (Except all versions over 800 V or over 70 A)



Datasheet

Dimensions

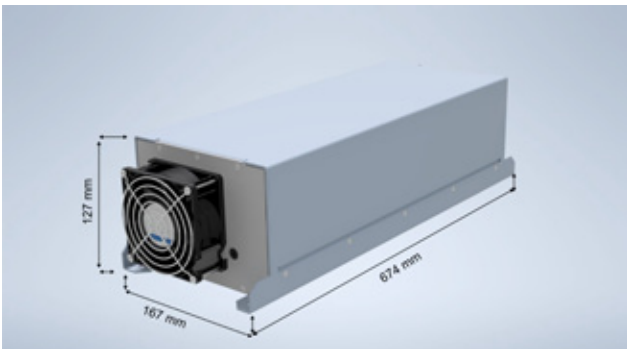


Illustration SD 30 and SD 150, front view

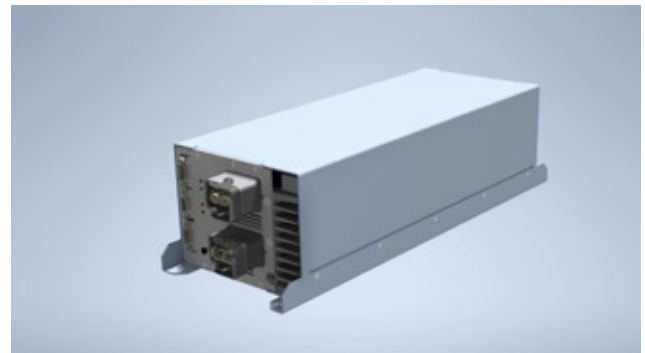


Illustration SD 30 and SD 150, rear view

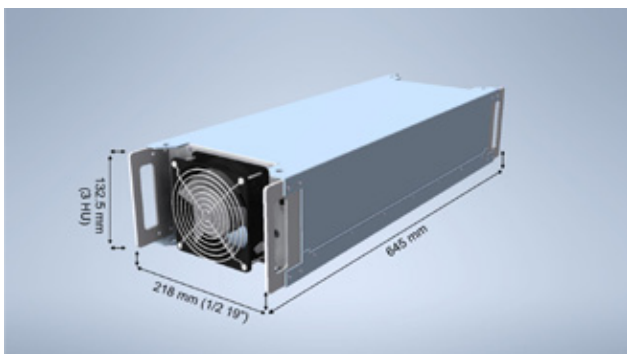


Illustration SD 300, front view

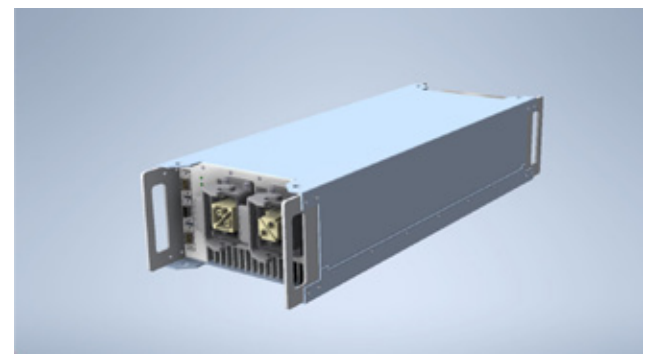


Illustration SD 300, rear view

© 2022 ADL Analoge & Digitale Leistungselektronik GmbH. All rights reserved.

ADL products are constantly improved. ADL therefore reserves the right to make technical changes without prior notice or obligation. To the best of our knowledge, the information contained in this product presentation (short version) is the most accurate available as the date of the current edition.

The information is not binding.

We are happy to help!

ADL Analoge & Digitale Leistungselektronik GmbH
Bunsenstr. 30 · D-64293 Darmstadt
www.adl-gmbh.com

Customer Support

Tel. +49 (0) 6151 86072-41 or -42
Fax +49 (0) 6151 86072-75
E-Mail: sales@adl-gmbh.com