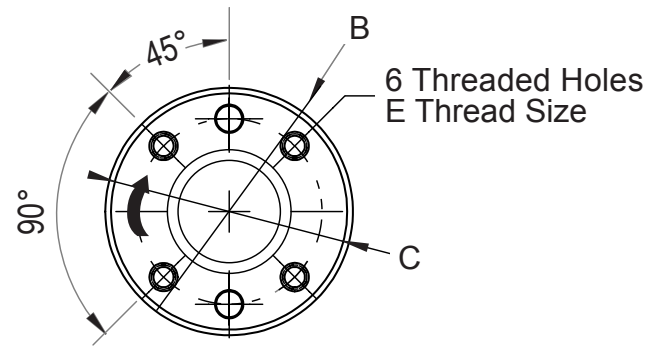
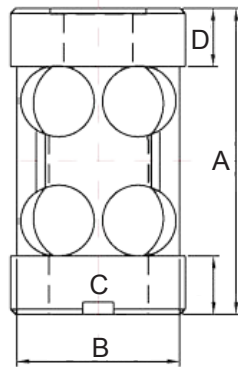
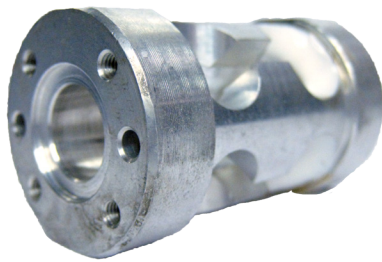


RST1 Reaction Torque Sensor



Accuracy Specifications

Accuracy	
Non-linearity	± 0.2% of Full Scale
Hysteresis	± 0.2% of Full Scale
Non-repeatability	± 0.05% of Full Scale

Load Cell Specifications

Typical Values	
Zero Balance	1% of Full Scale
Safe Overload	150% of Full Scale
Ultimate Overload	200% of Full Scale
Full Scale Output	2 ± 1% mv/V
Input Impedance	410 ± 30 Ω
Output Impedance	350 ± 4 Ω
Insulation	≥ 2000 MΩ / 50 V DC
Recommended Excitation Voltage	10 V DC
Compensated Temperature Range	14 to 100 °F (-10 to 40 °C)
Temperature Effect on Zero	0.036% of F.S. / 10°C
Temperature Effect on Span	0.036% of F.S. / 10°C

Dimensions

Capacity	Nm			
	6	10	60	150
A	50.8	50.8	50.8	50.8
B	30.5	30.5	37.6	37.6
C	22.86	22.86	25.40	25.40
D	9.6	9.6	12.9	12.9
E	M3	M3	M5	M5

(All dimensions are in mm)

Wiring Information

Cable Color Code	
Red	+ Excitation
Black	- Excitation
Green	+ Signal
White	- Signal

Ordering Information

Capacity	Part No.
6 N-m	RST1-006NM
10 N-m	RST1-010NM
60 N-m	RST1-060NM
150 N-m	RST1-150NM

USB Load Cell Configuration



Wireless Load Cell Configuration



Analog Load Cell Configuration

