

For the transport with a lifting device

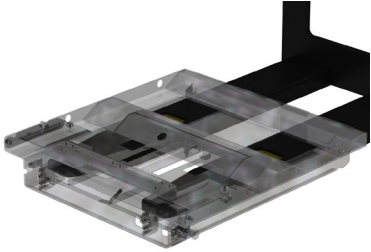


Fig. 1: TROMSTOP, example of use



Fig. 2: TROMSTOP, loading ramp fold out

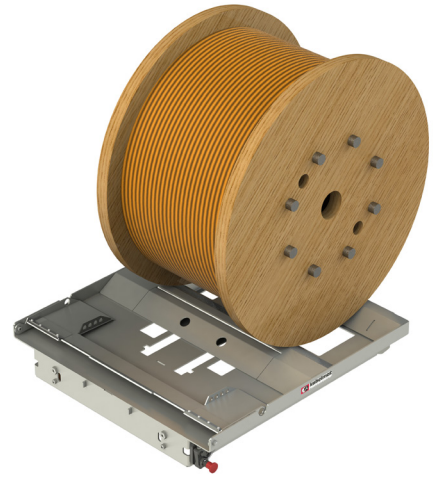


Fig. 3: TROMSTOP with drum Ø800 mm (sample)

TROMSTOP

- Transport and loading tool for transporting cable drums via forklift truck

Functionality:

The tines of the lifting equipment are driven in beneath the placement platform. As soon as the tines have reached the end of the platform, a locking pin closes beneath the platform - the platform is thereby firmly secured. The drums to be transported can now be rolled on via fold-out loading ramps. Predefined centring mechanisms ensure stable mooring of the drums, which corresponds with the load centre of the lifting equipment. Once the drums have been rolled on, the width-adjustable loading ramps are folded in and transportation can begin.

- Time-saving and safe transport of cable drums
- Easy storage and removal of cable drums in and out of a cable drum storage
- Suitable for almost all lifting devices

Technical data	TROMSTOP
Part No.	87000313
Drum Ø	400 - 1000 mm
Drum width	max. 710 mm
Drum weight	max. 900 kg
L x W x H	788 x 780 x 135 mm
Weight	approx. 45 kg
Material	zinc galvanised

Lifting equipment requirements (fork tines)	
Fork tine format	open
Fork outside spacing	min. 540 - max. 580 mm
Fork tine height (lowered)	max. 85 mm
Fork tine length	approx. 1150 mm
Fork tine width	170 - 185 mm
Fork tine width at the fork tine tip	min. 90 mm
Tine thickness at the fork tine tip	max. 35 mm
Sheet thickness at the fork tine tip	max. 6 mm

Load center distance
 for drum Ø 710 - 1000 mm (weight max. 900 kg) approx. 600 mm
 for drum Ø 400 - 630 mm (weight max. 250 kg) approx. 890 mm

Note: Not suitable for thin fork tine tip (see Lifting equipment requirements)

Indoor use only. Fig. may differ from original.

Technical modifications reserved. Status 12/2021