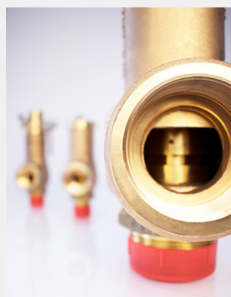
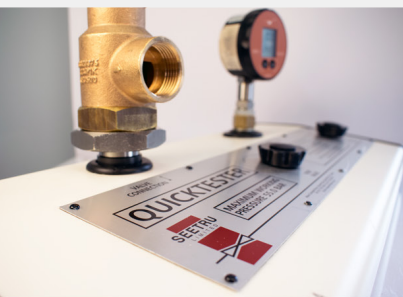
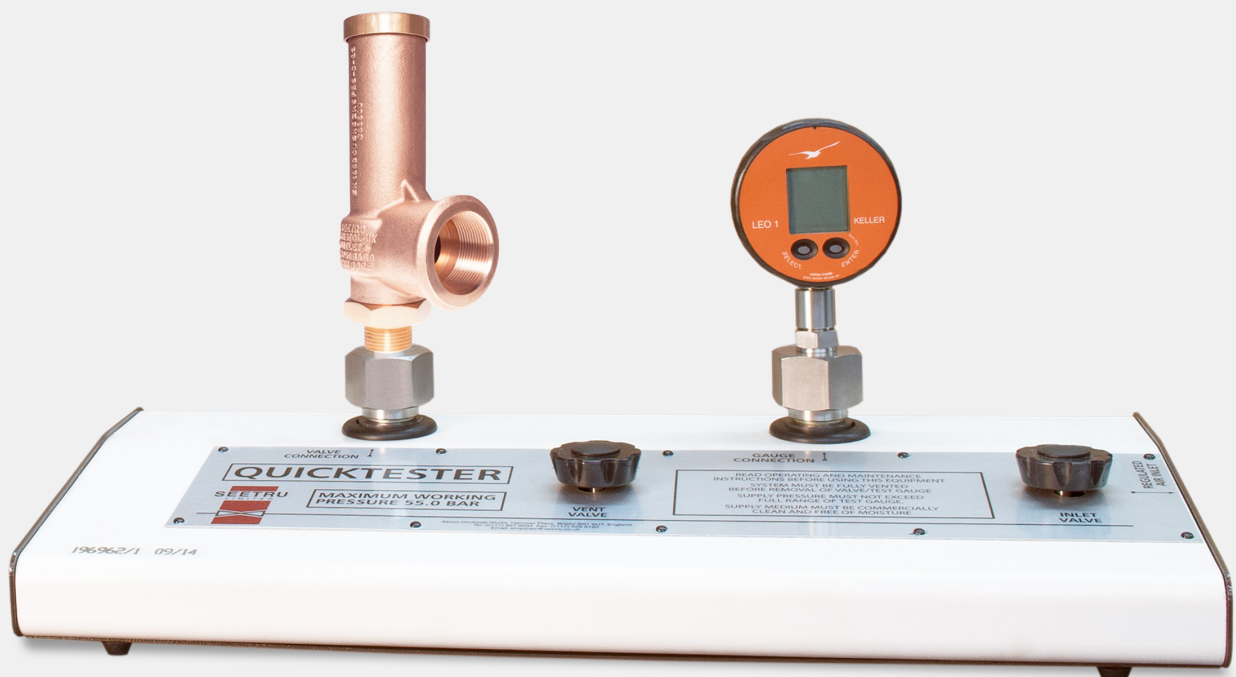


The Seetru Quicktester™

Simplified Valve Testing - for compliance with pressure systems and safety equipment regulations

SEETRU



Features & Benefits:

- Enables rapid valve testing in complete safety
- Highly portable, compact design
- Suitable for use with a wide range of elastomer sealed valves
- Accurate, unambiguous pressure readout
- Very low consumption of supply medium
- Easy to use and maintain
- Supplied with comprehensive instructions
- Pressure gauges supplied as optional extras
- Available with a range of thread size adaptors
- BSP or NPT adaptors available

Overview:

This compact, lightweight and portable design is very robust and able to meet the demands of a busy maintenance workshop or mobile operation. **The Seetru Quicktester™** can be used with plant generated air supplies or with mobile bottled gas. This test-bench can be supplied with a range of adaptors allowing connection between 1/4" to 1" BSP as standard, additional adaptors are available increasing the connection sizes up to 2" BSP. The Quicktester™ is also available with NPT connection adaptors upon request. Suitable for use with a wide range of elastomer sealed valves.

- Supplied with comprehensive instructions for Assembly, Disassembly, Maintenance Operation and Analysis

Max Operating Pressure - Up to 55 bar / 797.71.psi
Adaptor Size Range - 1/4" to 1" BSP available

