

DRV & DRVP Series

Flow Control Valves



DRV Series
Inline Mounting

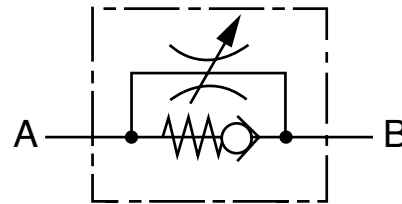


DRVP Series
Manifold Mounting

Specifications

- 5000 psi operating pressure
- 8 sizes, 1/8" - 1-1/2"
- NPTF or SAE O-Ring threaded connections, or manifold mounting
- Flows to 80 GPM
- Carbon steel housing
- FPM (Fluoroelastomer) O-Rings (standard)
- Color coded spindle for accurate flow control
- Provision for panel mounting
- Unique safety spindle design
- Temperature Range: -4° to 212°F at full pressure
- Size 16 and under zinc plated
- Size 20 and up phosphated

Hydraulic Symbol



Model Code

DRV - 06 - 01 . X / 5 - 25 - S

Flow Control Valve

- DRV = Inline Mounting
- DRVP = Manifold Mounting

Nominal Sizes

Nominal Size (DRV + DRVP)	SAE (DRV only) Tube Size	Thread Size	NPTF (DRV Only) Pipe Size	Pipe OD	BSPP (DRV Only) Thread Size
06 =	-2	5/16-24 UNF	1/8"	0.405"	G1/8
08 =	-4	7/16-20 UNF	1/4"	0.540"	G1/4
10 =	-6	9/16-18 UNF	3/8"	0.675"	G3/8
12 =	-8	3/4-16 UNF	1/2"	0.840"	G1/2
16 =	-12	1-1/16-12 UN	3/4"	1.050"	G3/4
20 =	-16	1-5/16-12 UN	1"	1.315"	G1
25 =	-20	1-5/8-12 UN	1-1/4"	1.660"	G1 1/4
30 =	-24	1-7/8-12 UN	1-1/2"	1.900"	G1 1/2

Housing Material

- 01 = Carbon Steel

Modification Number

Port Configuration

- (omit) = DRVP only
- 0 = BSPP to DIN 3852, Part 2 -X
- 5 = NPTF (ANSI B1.20.3)
- 12 = SAE - SAEJ1926 Ports with ISO 725 Threads and O-Ring Sealing

Cracking Pressure

- (omit) = 7 psi standard
- 25 = 25 psi optional
- 65 = 65 psi optional

Supplementary Details

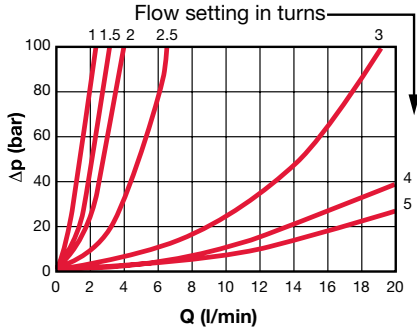
- S = Panel Mounting Kit (not available in sizes 20, 25, 30)

FLOW CONTROL VALVES

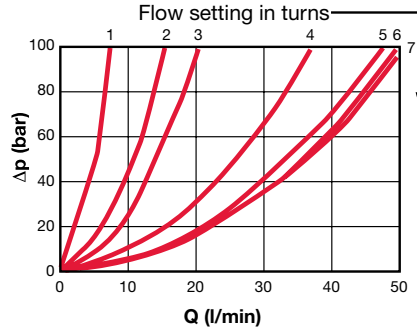
Pressure Drop Curves

Flow Direction: A to B / Throttled Flow

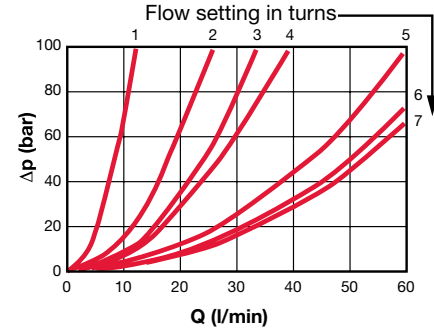
Size 06



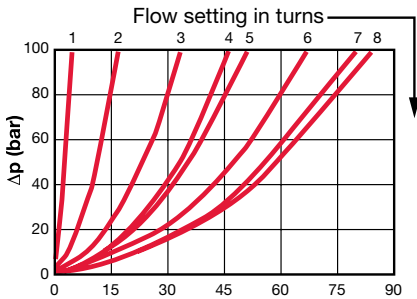
Size 08



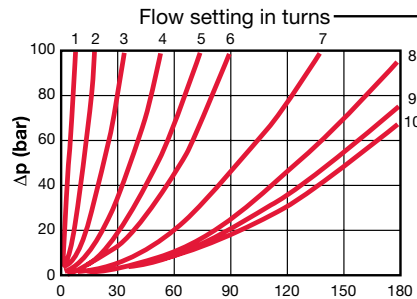
Size 10



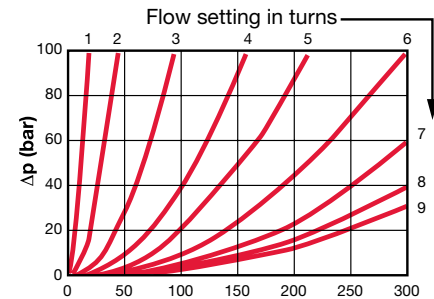
Size 12



Size 16

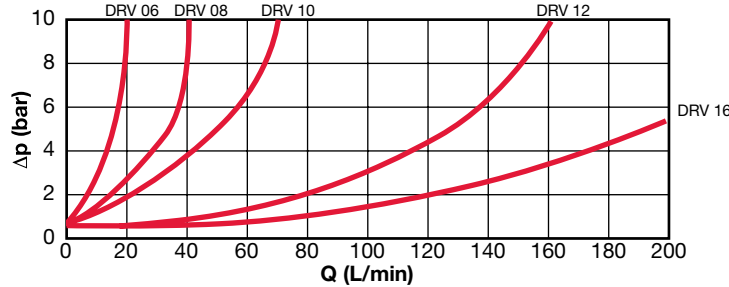


Size 20, 25, 30

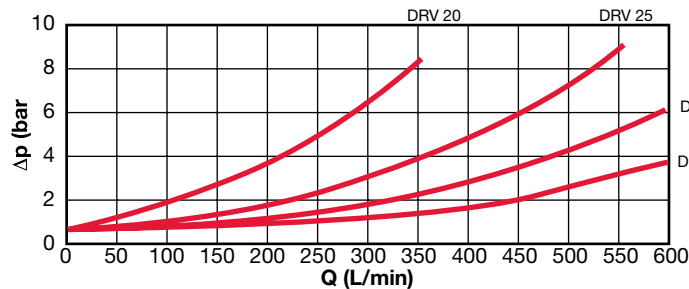


Flow Direction: B to A / Free Flow Through Check Valve

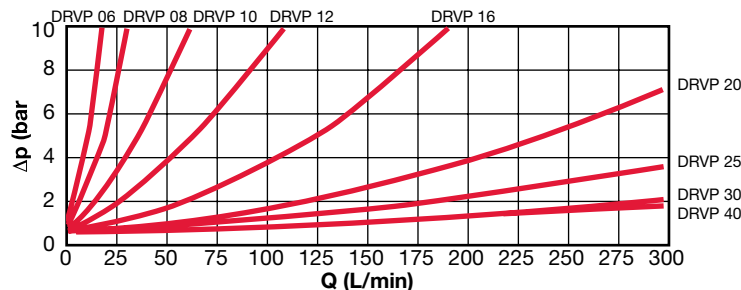
DRV-06-01.X to DRV-16-01.X



DRV-20-01.X to DRV-40-01.X



DRVP-06-01.X to DRVP-40-01.X



Pressure Drop curves were established by using mineral oil with kinematic viscosity 335 SUS at 86°F / 30°C