

Guardian G2

Safety Chucks

**New for
2021**

Montalvo Guardian G2 Safety Chucks

The newly designed G2 Guardian Safety Chucks feature longer service life, easier roll loading and lowest total cost of ownership in the industry. Heavy duty bearings and redesigned handwheel ensures maximum load and speed capacities. A new redesigned journal seat that is now fully replaceable not only reduces maintenance and increases service life but reduces overall costs. Fixed or sliding shaft models combined with numerous options makes the Guardian line of chucks suitable for practically any application.

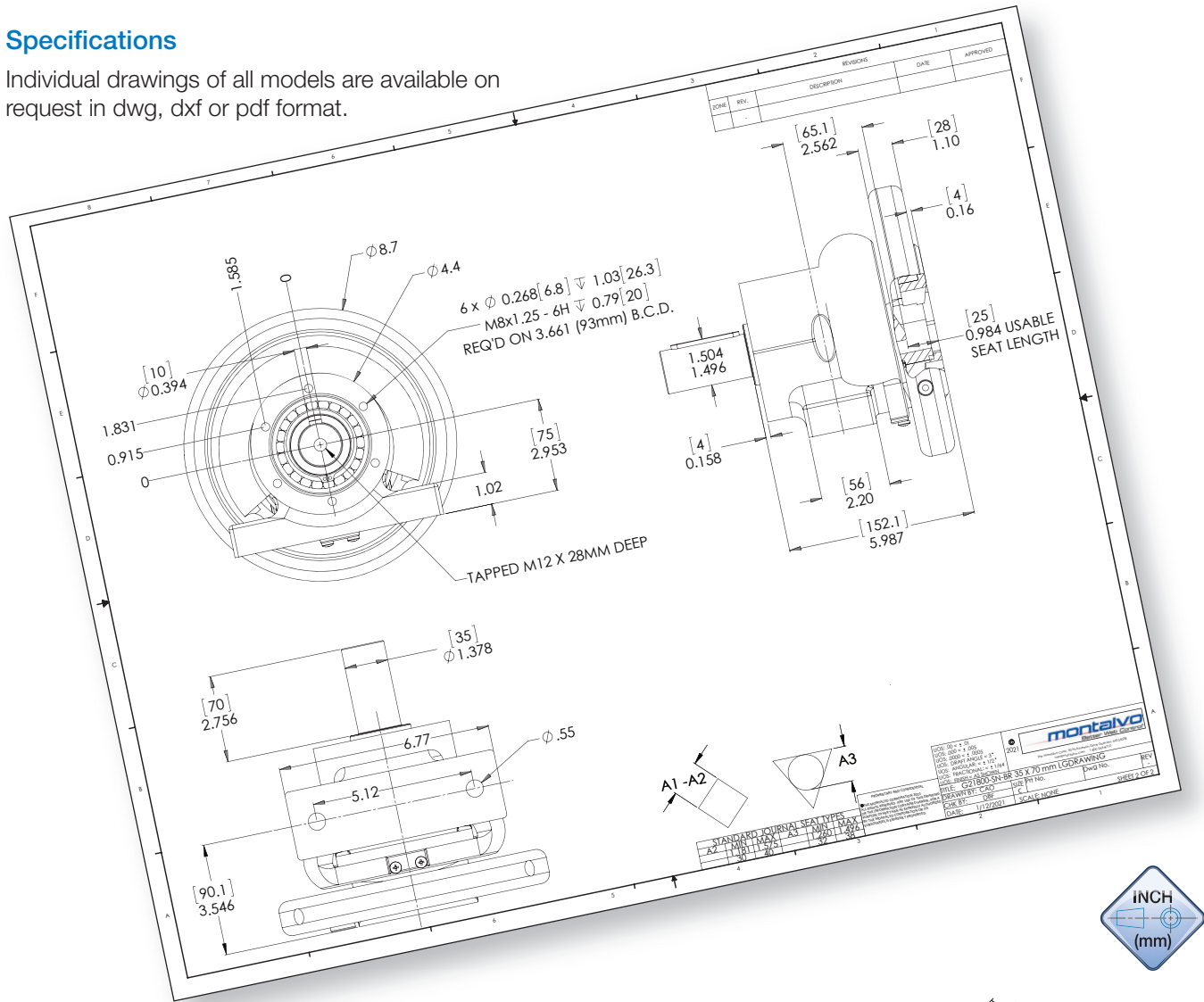
Features

- ▶ Available in A1 (Square), A2 (Diamond) or A3 (Triangle) journal seat types
- ▶ Hardened replaceable journals - come as kit
- ▶ Easier roll loading for operators
- ▶ Longer service life
- ▶ Built to suit customizable shaft ends
- ▶ Self centering journal seats (A2 and A3)
- ▶ Available with pre-installed Montalvo brake
- ▶ Lowest total cost of ownership
- ▶ Backward compatible with G and KL Series Safety Chucks



Specifications

Individual drawings of all models are available on request in dwg, dxf or pdf format.



Chuck Capacity & Journal Dimensions

Model	Max. Roll Weight* lb (N) (per pair of chucks)	Max. Torque** in-lb (Nm)	Standard Shaft Extension in (mm)	Max. Shaft Diameter in (mm)	A1 (Square)*** Journal Seat A1 = in (mm)	A2 (Diamond) Journal Seat A2 = in (mm)	A3 (Triangle) Journal Seat A3 = in (mm)
G2-500***	1,124 (5,000)	1,151 (130)	2.75 (70)	1.18 (30)	1.000 (25)	—	—
G2-1000	2,248 (10,000)	1,770 (200)	3.54 (90)	1.378 (35)	1.000-1.25 (20-30)	1.000-1.25 (20-30)	0.787-1.181 (20-30)
G2-1800	4,047 (18,000)	3,363 (380)	3.94 (100)	1.96 (50)	1.25-1.50 (30-40)	1.25-1.50 (30-40)	1.260-1.496 (32-38)
G2-3000	6,744 (30,000)	10,621 (1,200)	5.51 (140)	2.55 (65)	1.50-2.00 (40-50)	1.50-2.00 (40-50)	1.575-1.850 (40-47)

* Max. Roll Weight must be reduced for A2 (Diamond) Journal Seat by 25 to 30% depending on torque, speed and deflection of winding shaft. Consult a Montalvo Application Specialists for assistance.

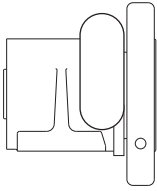
** Max. Torque must be reduced for A2 (Diamond) Journal Seat by 40 to 50% depending on torque, speed and deflection of winding shaft. Consult a Montalvo Application Specialists for assistance.

*** G2-500 available in A1 (Square) Journal Seat only.

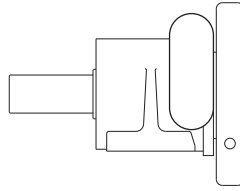
Normal Safety Chucks

Pedestal Mount (SN)

Available in 500, 1000, 1800 and 3000



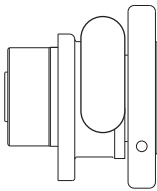
Without Shaft End



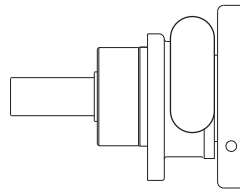
With Shaft End

Flange Mount (FN)

Available in 500, 1000, 1800 and 3000



Without Shaft End

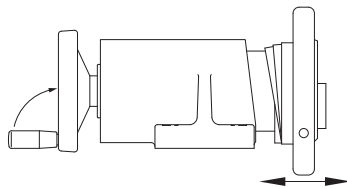


With Shaft End

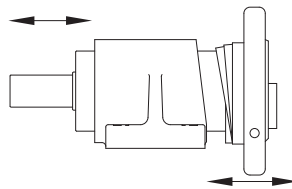
Sliding Safety Chucks

Pedestal Mount (SS)

Available in 1800 only



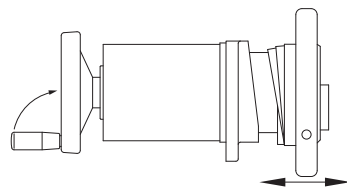
Hand Wheel Drive



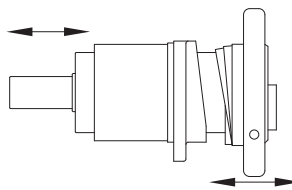
Sliding Shaft End

Flange Mount (FS)

Available in 1800 only



Hand Wheel Drive



Sliding Shaft End

← → Represents 50 or 100 mm Axial Adjustment

Journal Seat

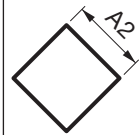
Types / Advantages

A1 (Square)



Max. reel weight capacity
 Max. torque capacity
 Cost effective

A2 (Diamond)



Easy loading

A3 (Triangle)



Max. reel weight capacity
 Max. torque capacity
 Easy loading
 Optimal at higher rpm



Montalvo

Guardian G2

Safety Chucks

G2-1000 Flange Mount



Options

Safety Lock Location (select Left or Right side)

Offers operator comfort and safety. Kits available to swap location.

Axial Carrier

Maintains precise shaft positioning during axial adjustment.

Hand Wheel Open/Closed Indication

Indicates whether hand wheel is open or closed via an electronic sensor.

Hand Wheel Opening Position Indication

Indicates when hand wheel is in precise open position via an electronic sensor.

High Speed Safety Chuck

Handles web speeds in excess of 980' (300m) per minute. This is achieved by balancing the hand wheel (with safety lock) and shaft.



Complete hand wheel assemblies ready to install

G2-500 Pedestal Mount



Guardian safety chucks feature hardened replaceable journal components



G2-3000 Pedestal Mount



Montalvo V250 brake mounted to a G2-1800 Pedestal Mount

The Montalvo Corporation

EST. 1947

montalvo

Better Web Control®

50 Hutcherson Drive, Gorham, Maine 04038 USA
Fax: 1-800-644-5097 / 207-856-2509

1-800-226-8710 / info@montalvo.com / www.montalvo.com

Technical details subject to change without notice. G2-US-03 © Montalvo